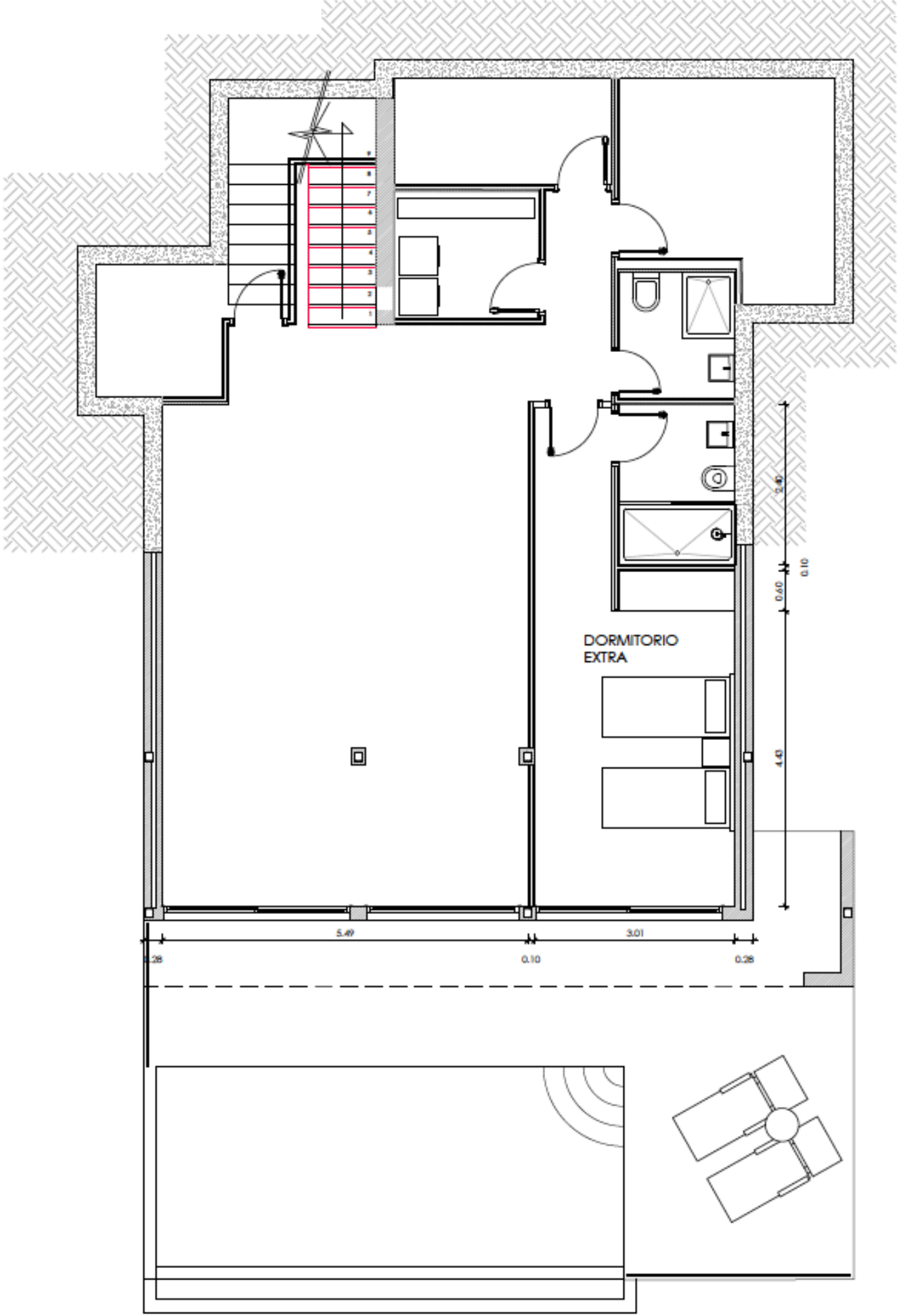
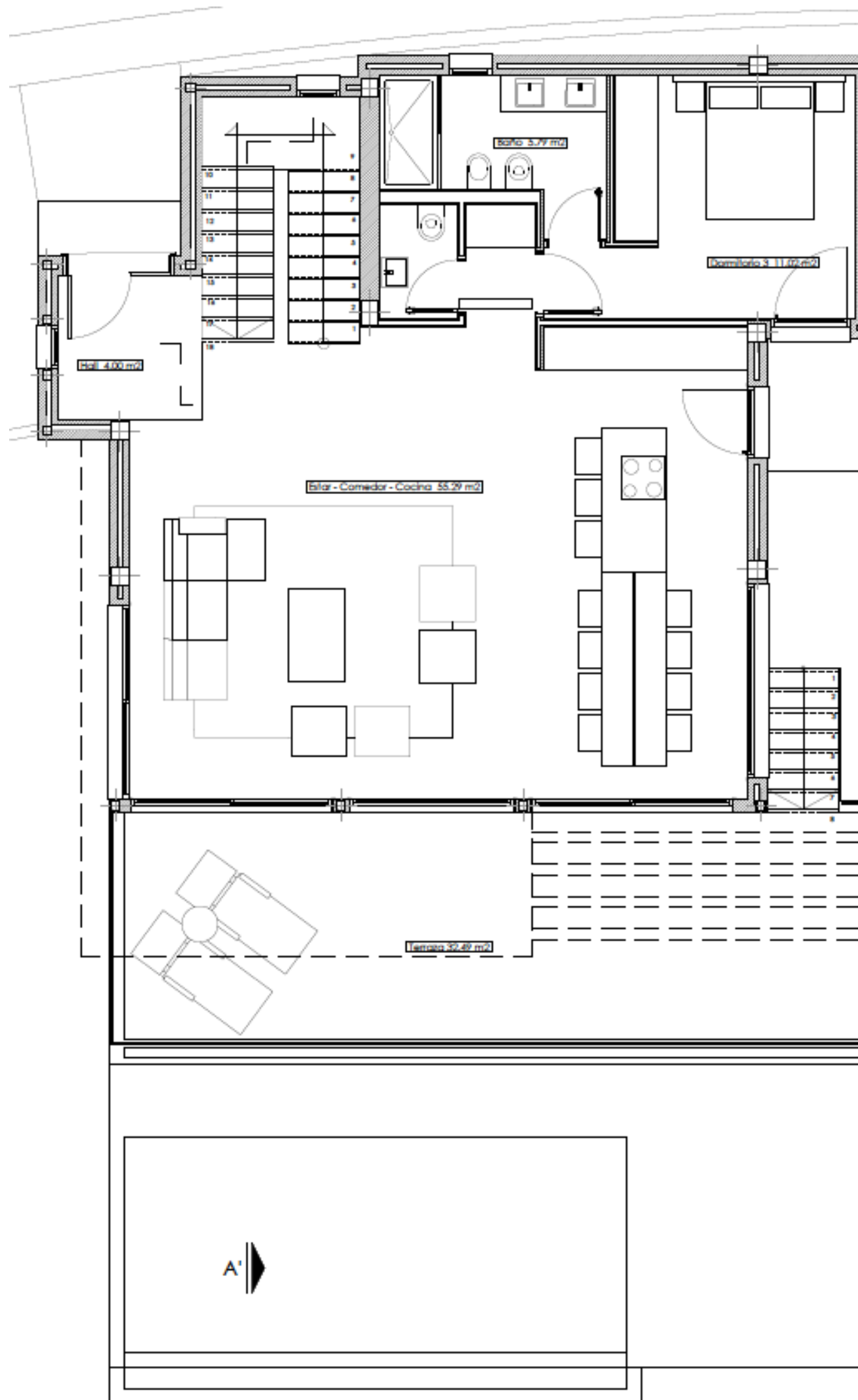


BASEMENT



Key plan

VILLA TYPE A GROUND FLOOR



Planta Baja

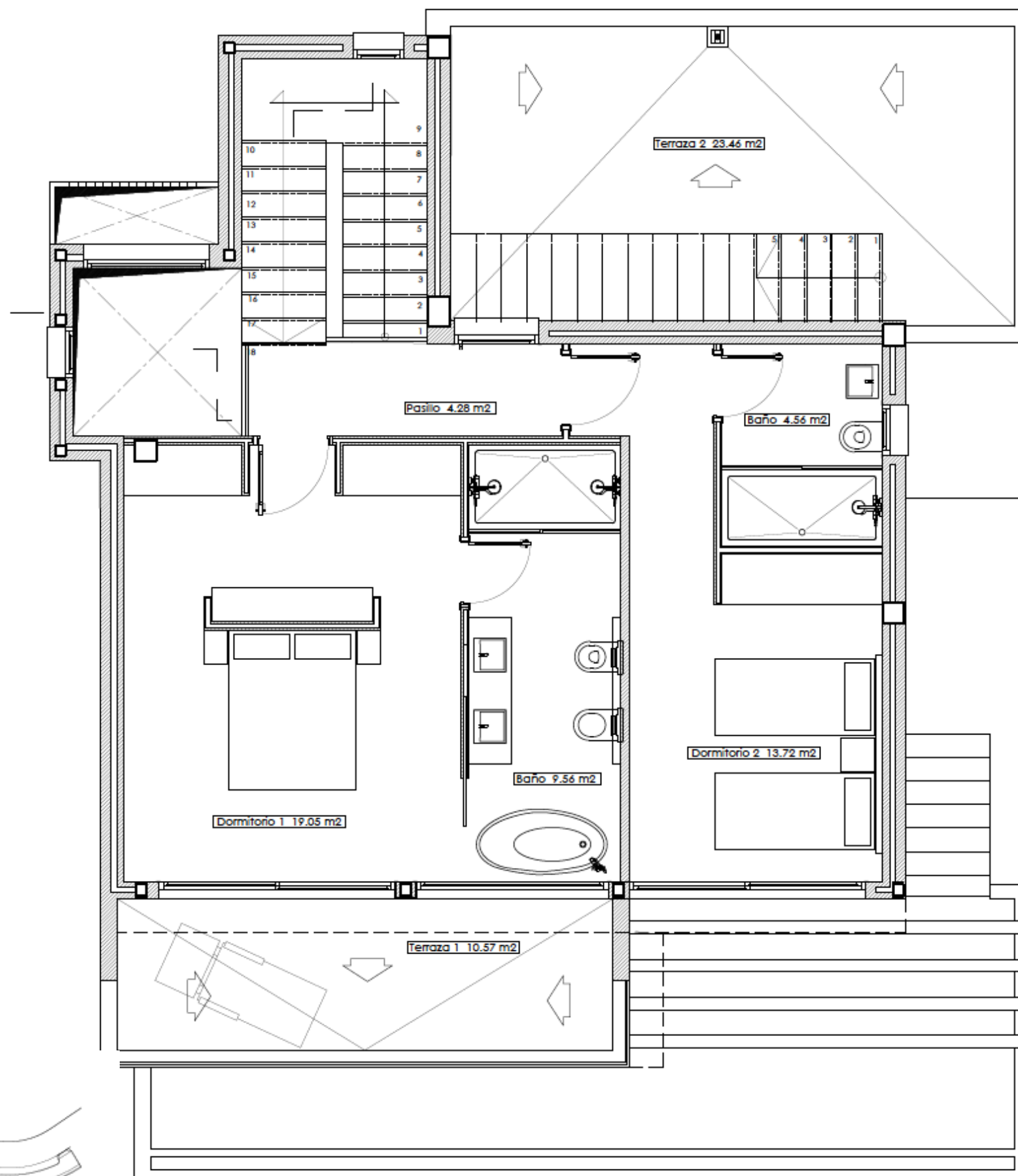
Terraza	32.49 m2
Estar / comedor / cocina	55.29 m2
Hall	4.00 m2
Dormitorio 3	11.02 m2
Baño	5.79 m2
Aseo	1.75 m2
Pasillo	1.11 m2
Sup. util	82.09 m2
Sup. const.	107.56 m2



Key plan

VILLA TYPE A

1st FLOOR



Planta 1º

Terraza 1	10.57 m ²
Terraza 2	23.46 m ²
Dormitorio 1	19.05 m ²
Baño	9.56 m ²
Dormitorio 2	13.72 m ²
Baño	4.56 m ²
Pasillo	4.28 m ²

Sup. util 51.17 m²

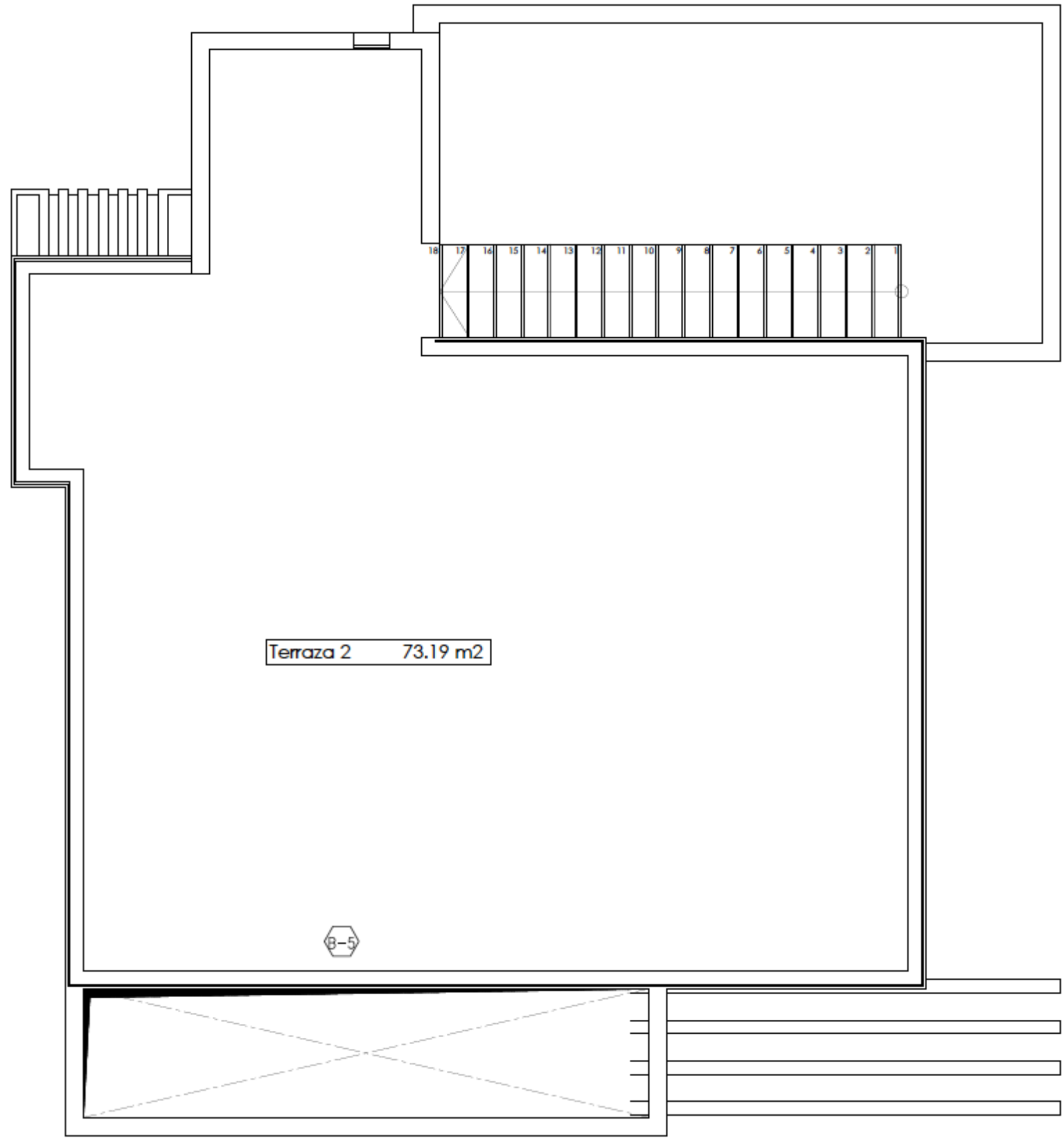
Sup. const. 73.82 m²



Key plan

VILLA TYPE A

TERRACE SOLARIUM



Key plan