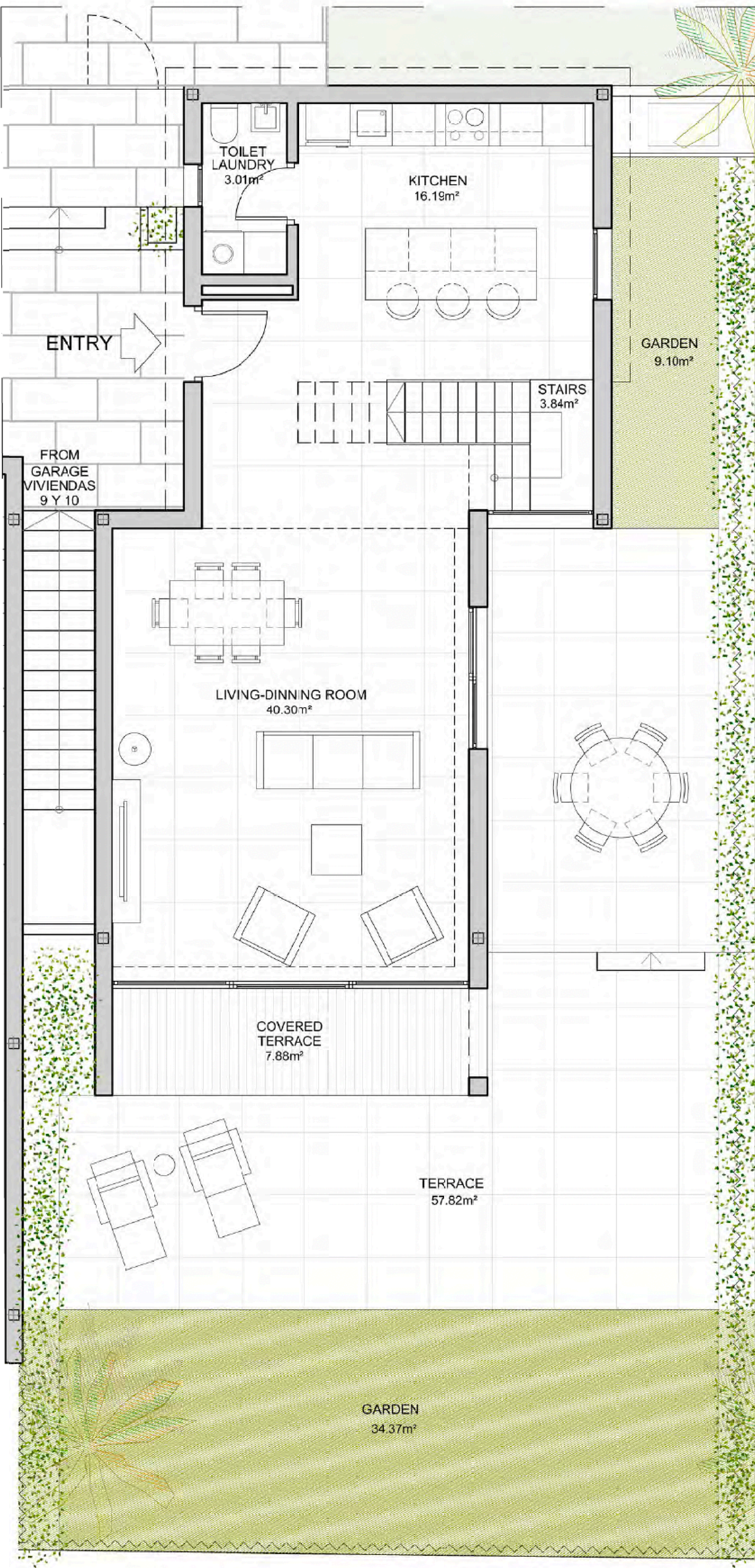


CHRISTIE'S
INTERNATIONAL REAL ESTATE

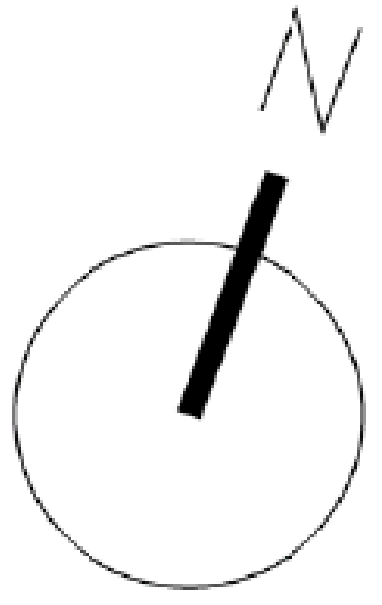
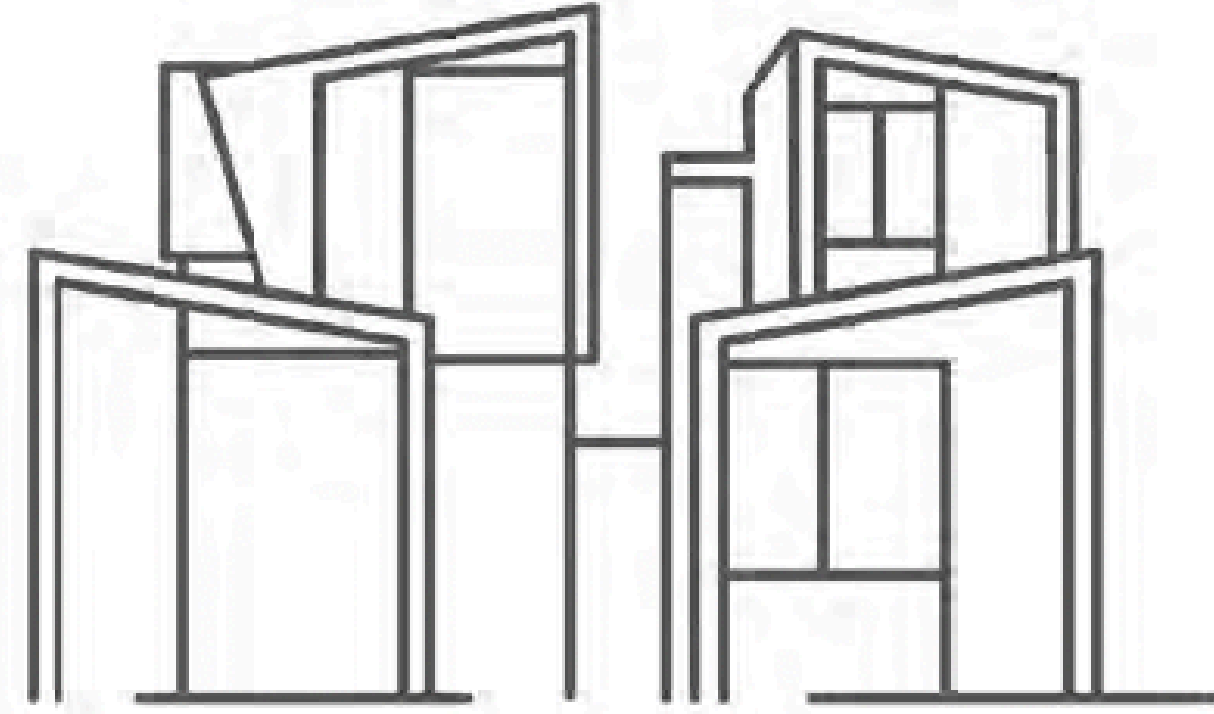
———— COSTA DEL SOL ————

Floor plans Ref. 2616

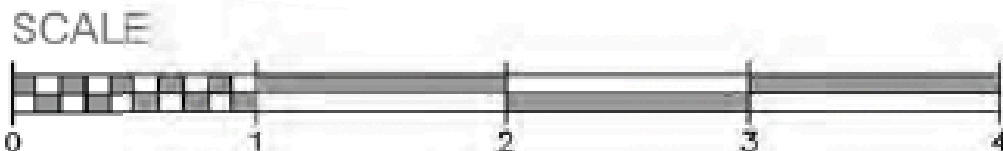
UNIT	TYPOLOGY	LEVEL			TERRACE	GARDEN	SWIMMING POOL AREA	TOTAL BUILT-UP AREA
		BASEMET	GROUND FLOOR	TOP FLOOR				
10	CENTRAL	52,7	72,65	72,5	66,08	43,47	0	307,40

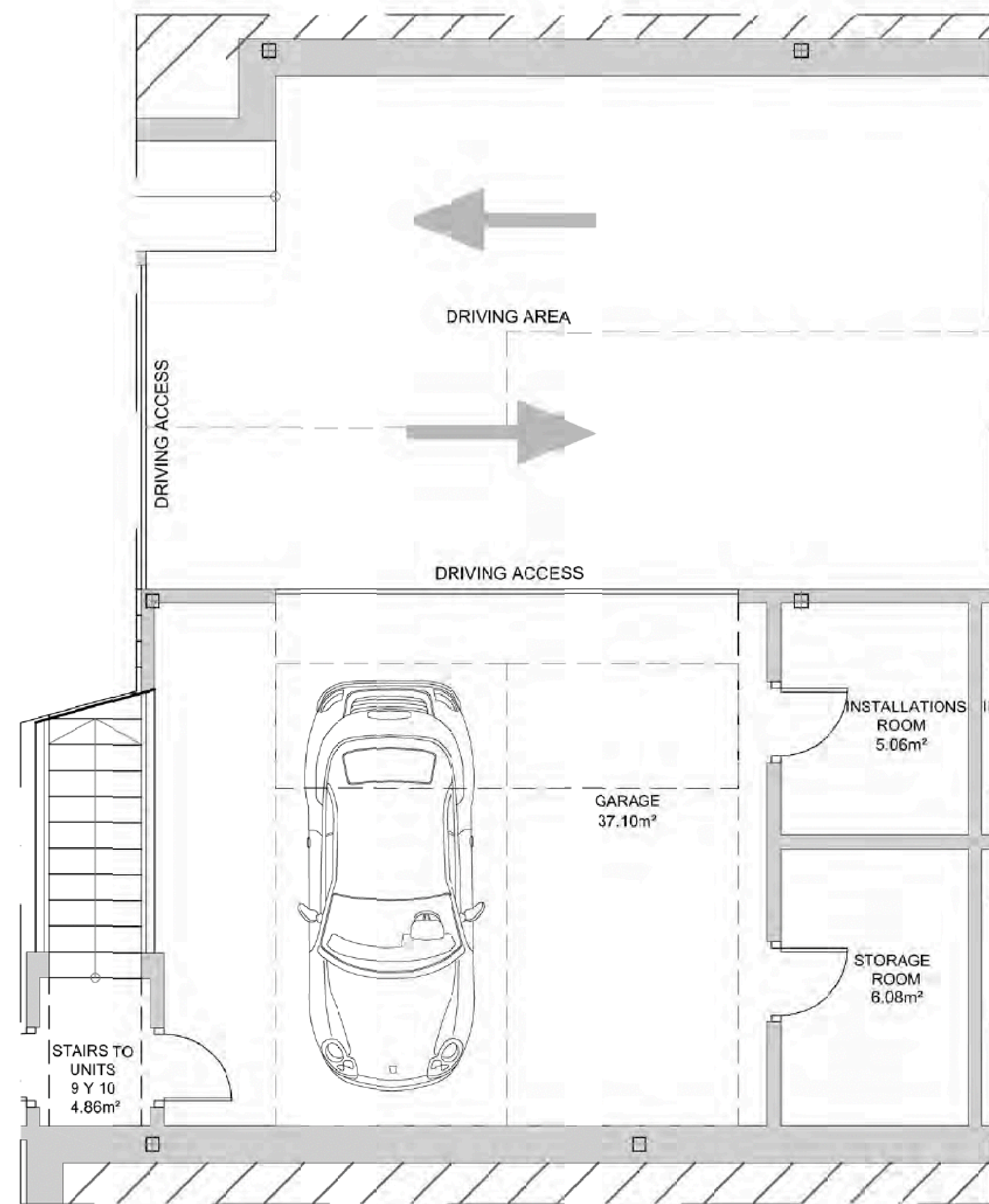


UNIT 10
PHASE 1

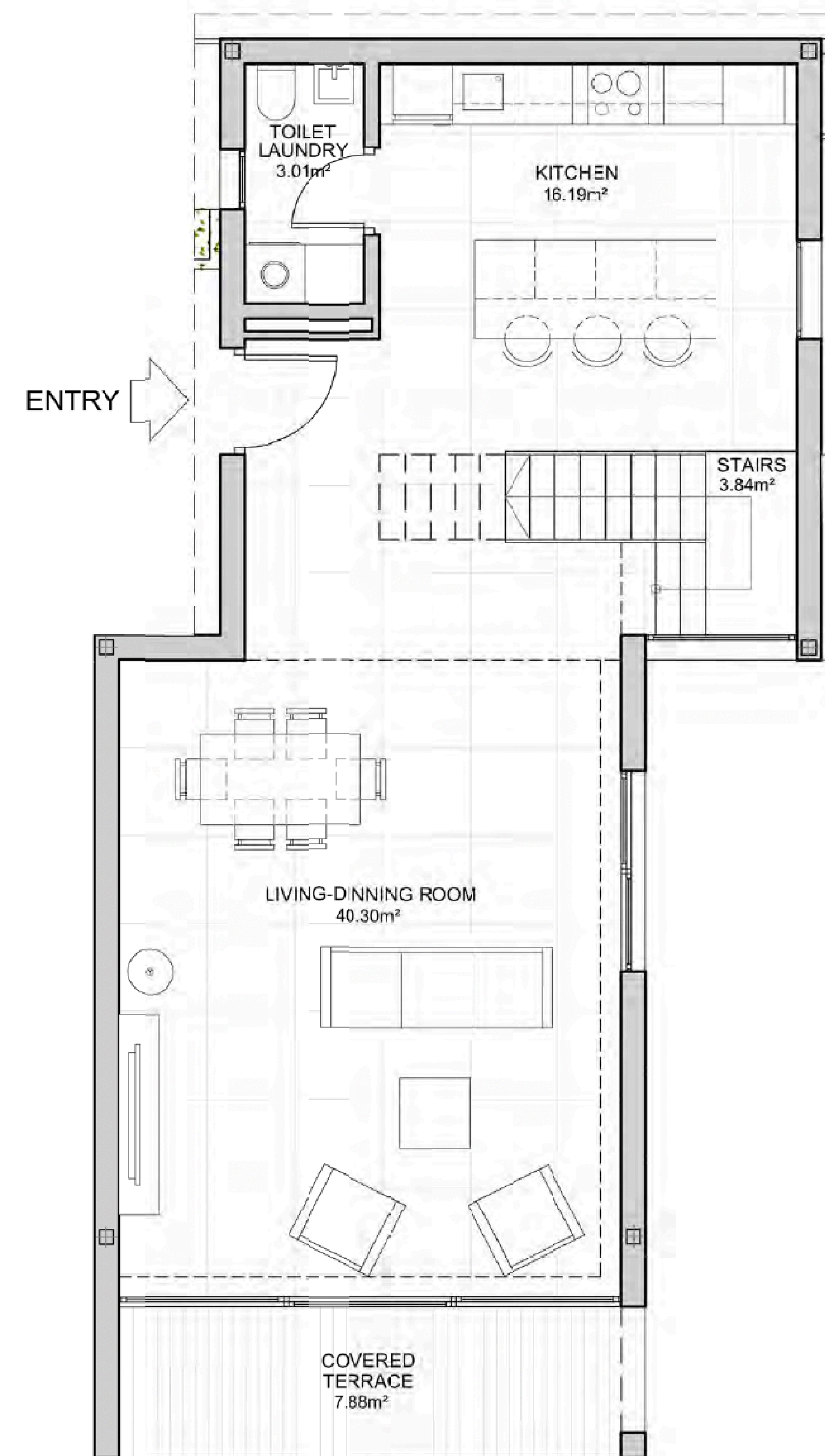


SITE

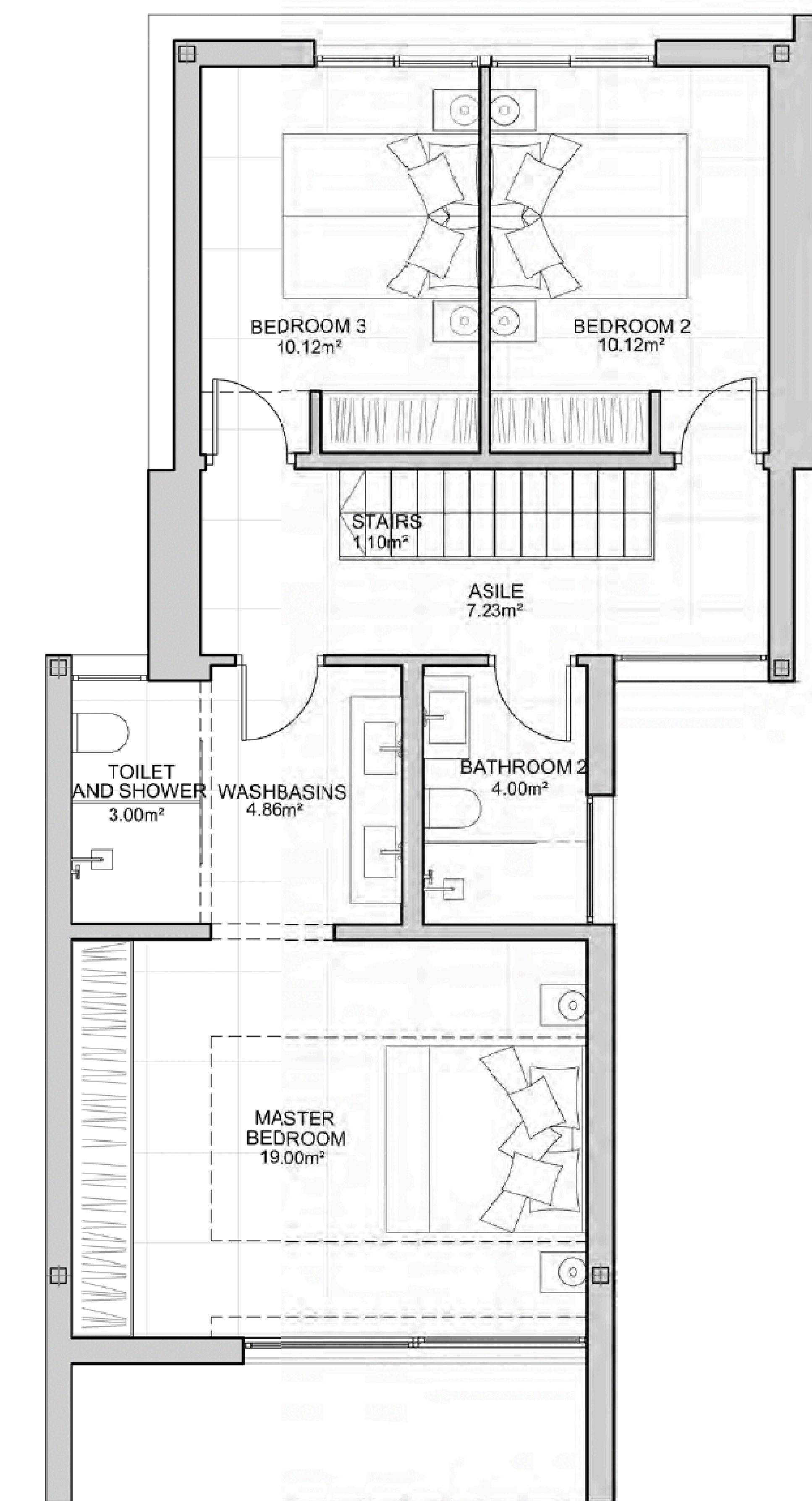




PARKING AND STORAGE ROOM

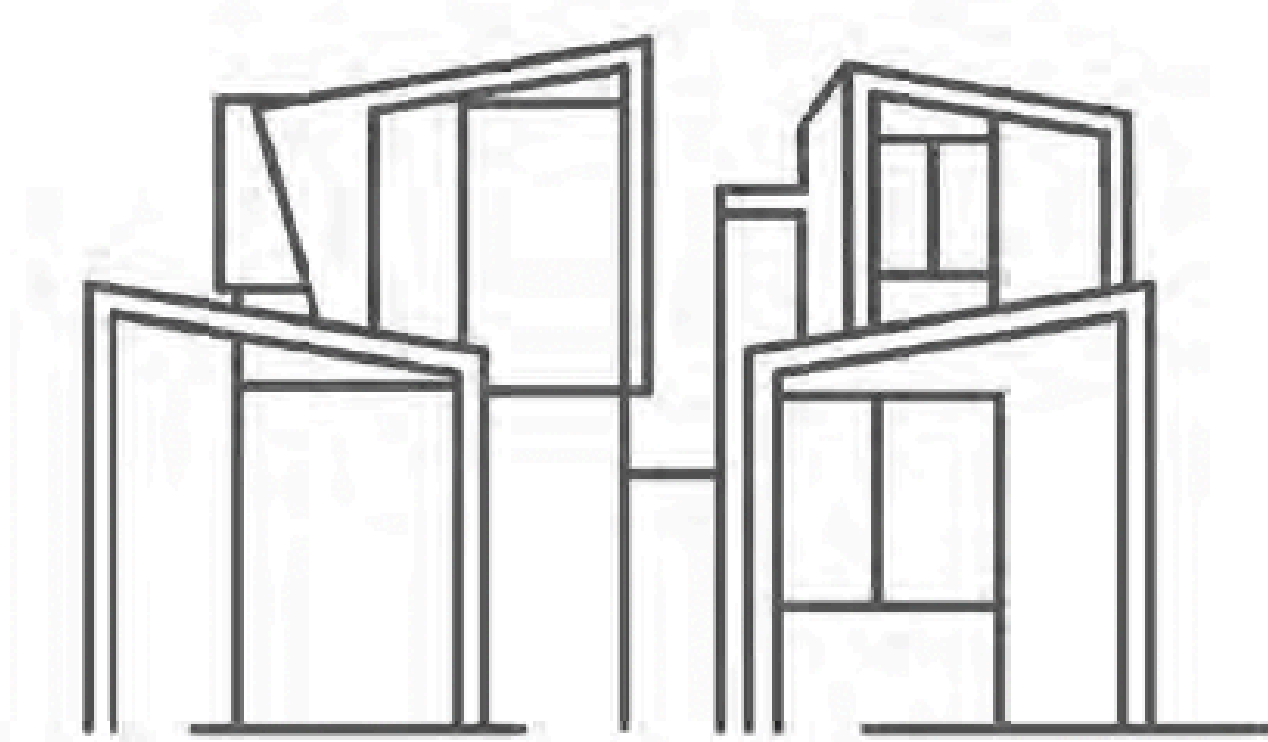


GROUND FLOOR

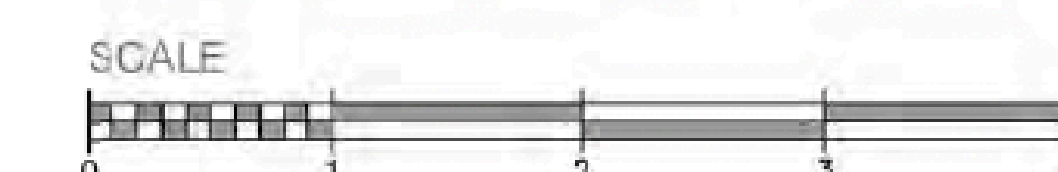


TOP FLOOR

UNIT 10
PHASE 1



UNIT	TYPOLOGY	LEVEL			TERRACE	GARDEN	SWIMMING POOL AREA	TOTAL BUILT-UP AREA
		BASEMET	GROUND FLOOR	TOP FLOOR				
10	CENTRAL	52,7	72,65	72,5	66,08	43,47	0	307,40



CHRISTIE'S
INTERNATIONAL REAL ESTATE
———— COSTA DEL SOL ————

Where *Luxury* lives

Velázquez, 1, 29602 Marbella, España
+34 951 122 313 | marbella@cire-costadelsol.com

Paseo de Reding, 25, 29016 Málaga, España
+34 951 122 312 | malaga@cire-costadelsol.com