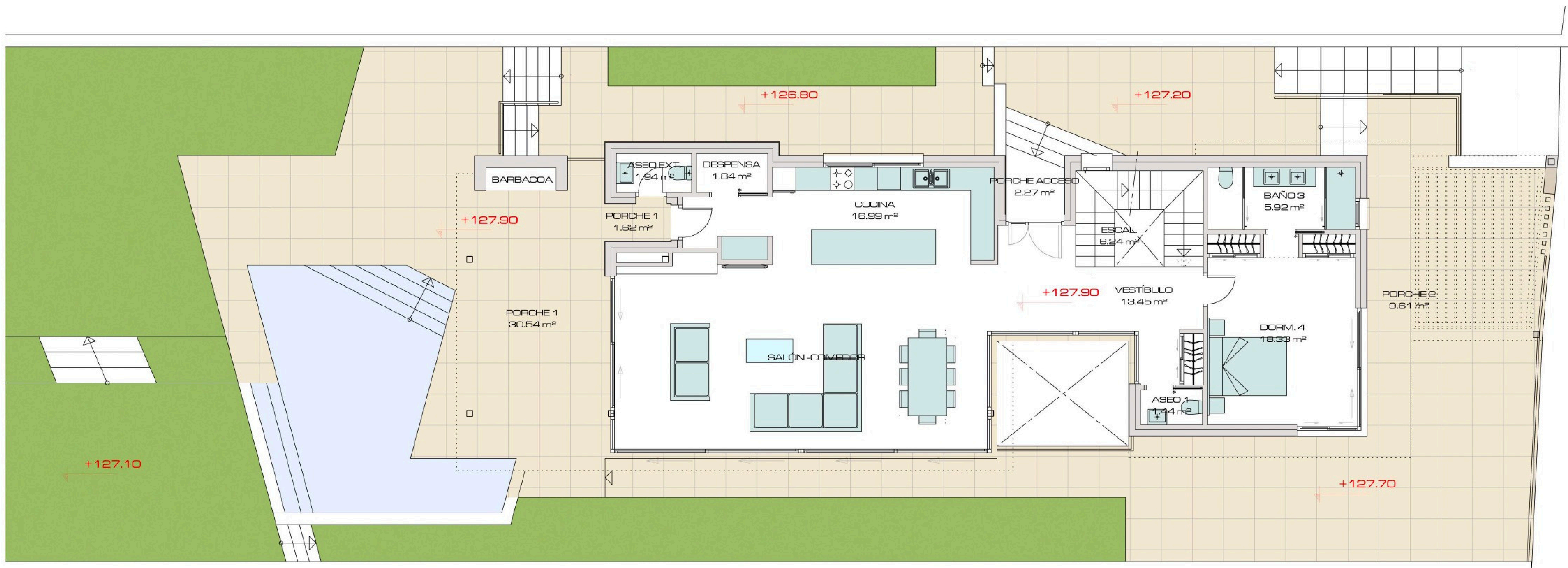


CHRISTIE'S
INTERNATIONAL REAL ESTATE

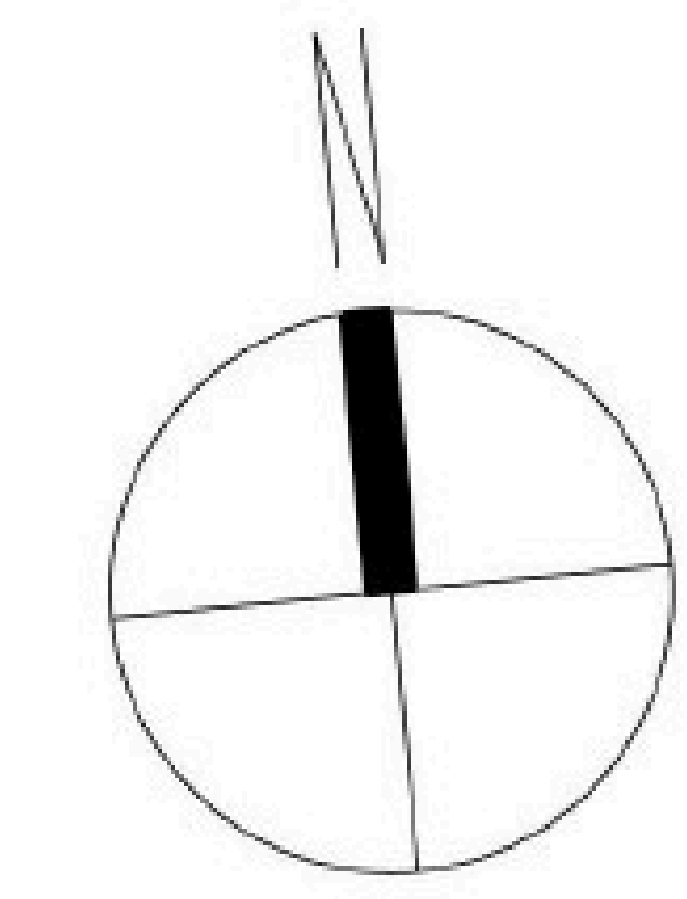
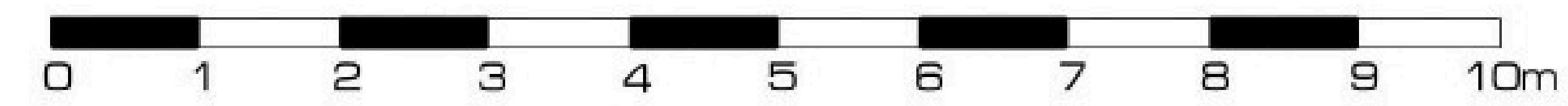
———— COSTA DEL SOL ————

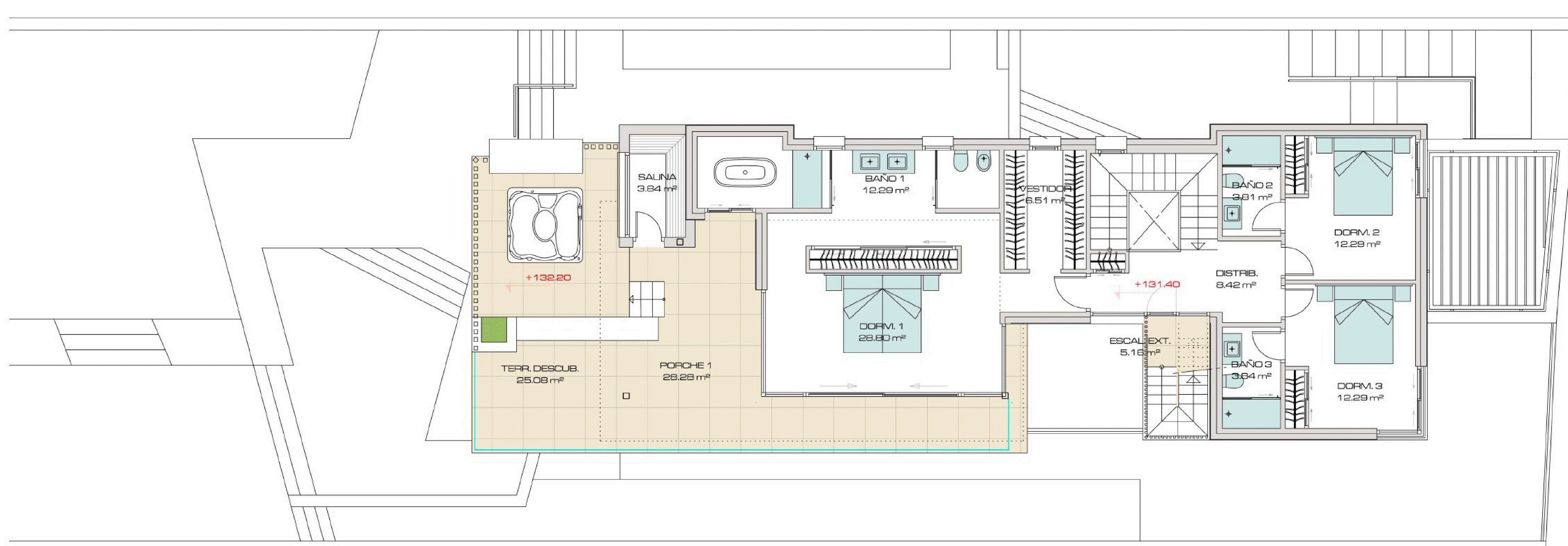
Floor plans Ref. 2197



PARCELA 6.2
PLANTA BAJA-DISTRIBUCIÓN

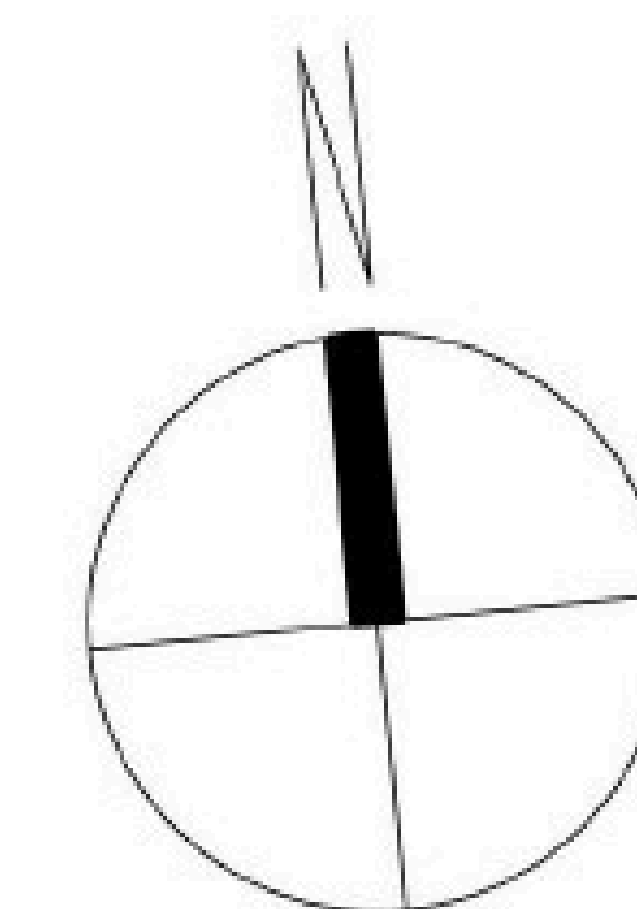
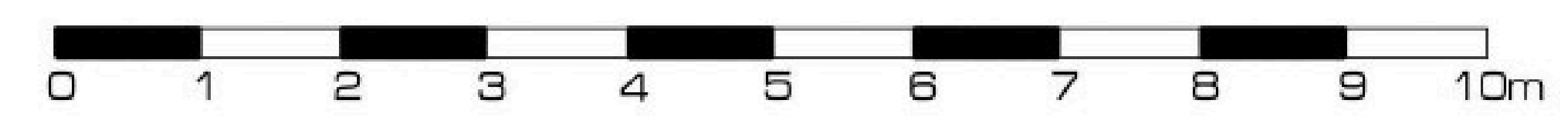
Sup. Parcela: 641,52 m²
 Sup. construida cerrada: 138,91 m²
 Sup. porches cubiertos. 44,04 m²
 Sup. piscina: 27,68 m²

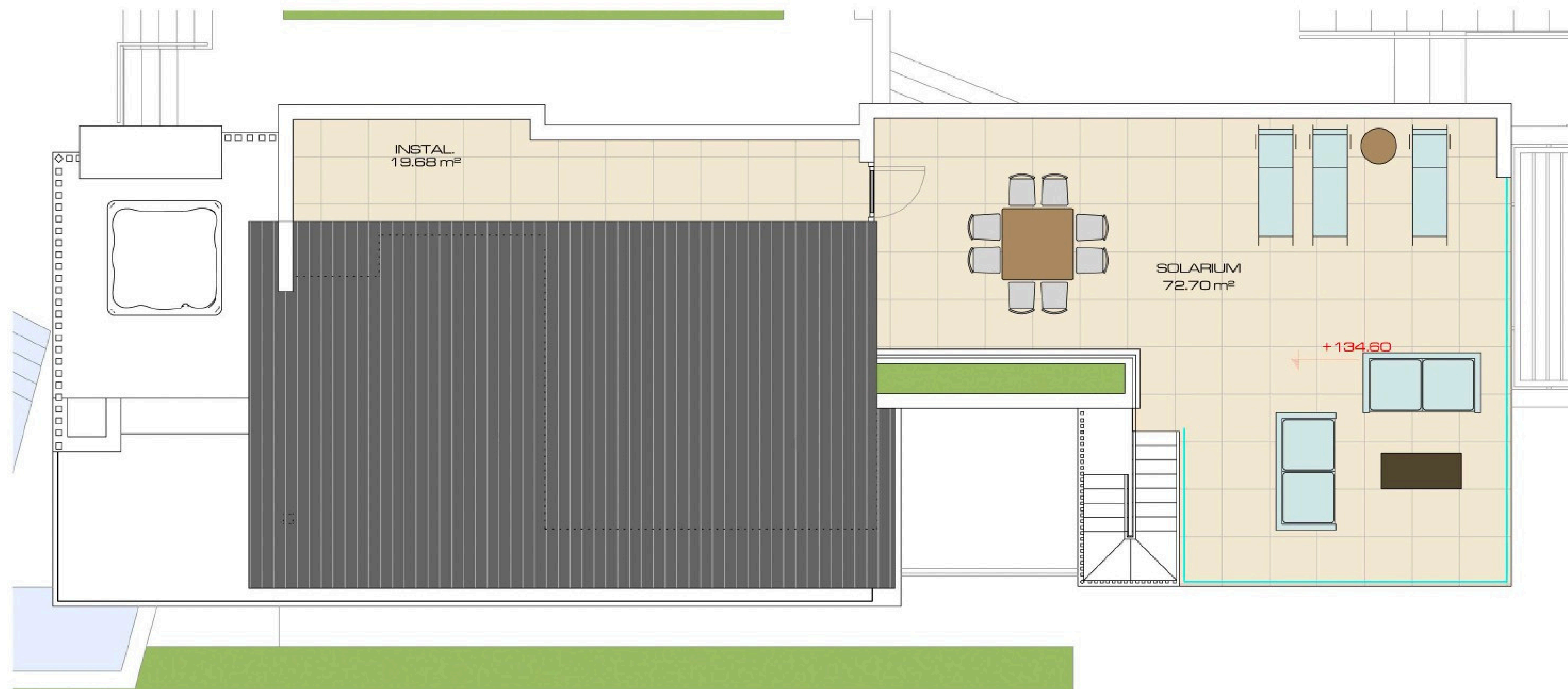




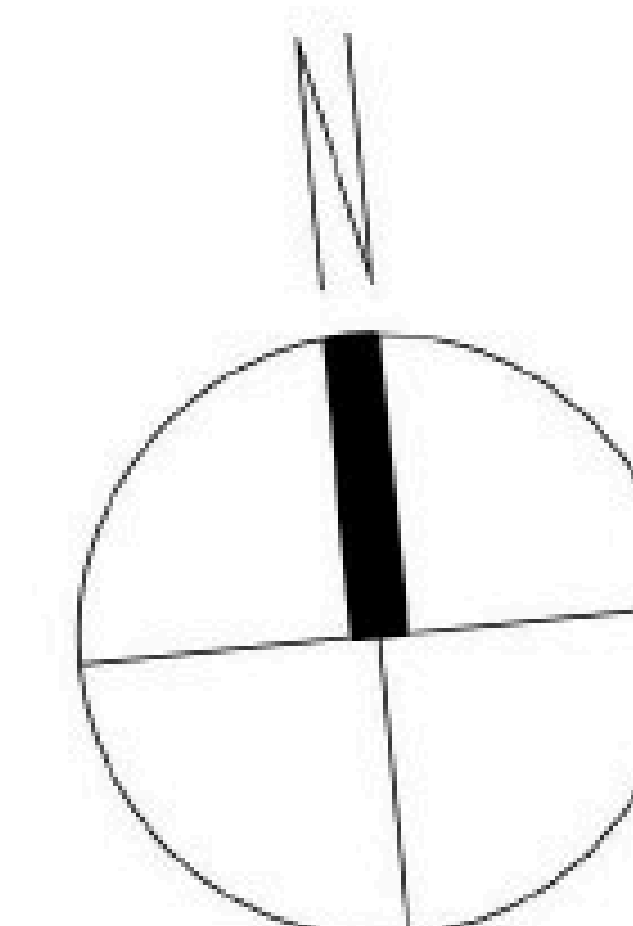
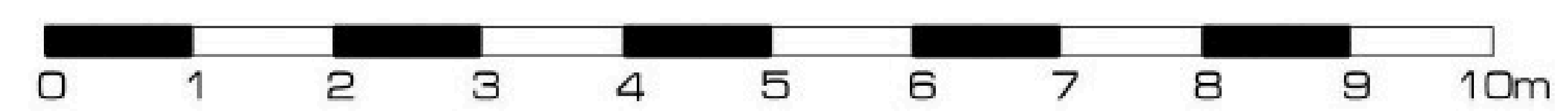
PARCELA 6.2
PLANTA ALTA-DISTRIBUCIÓN

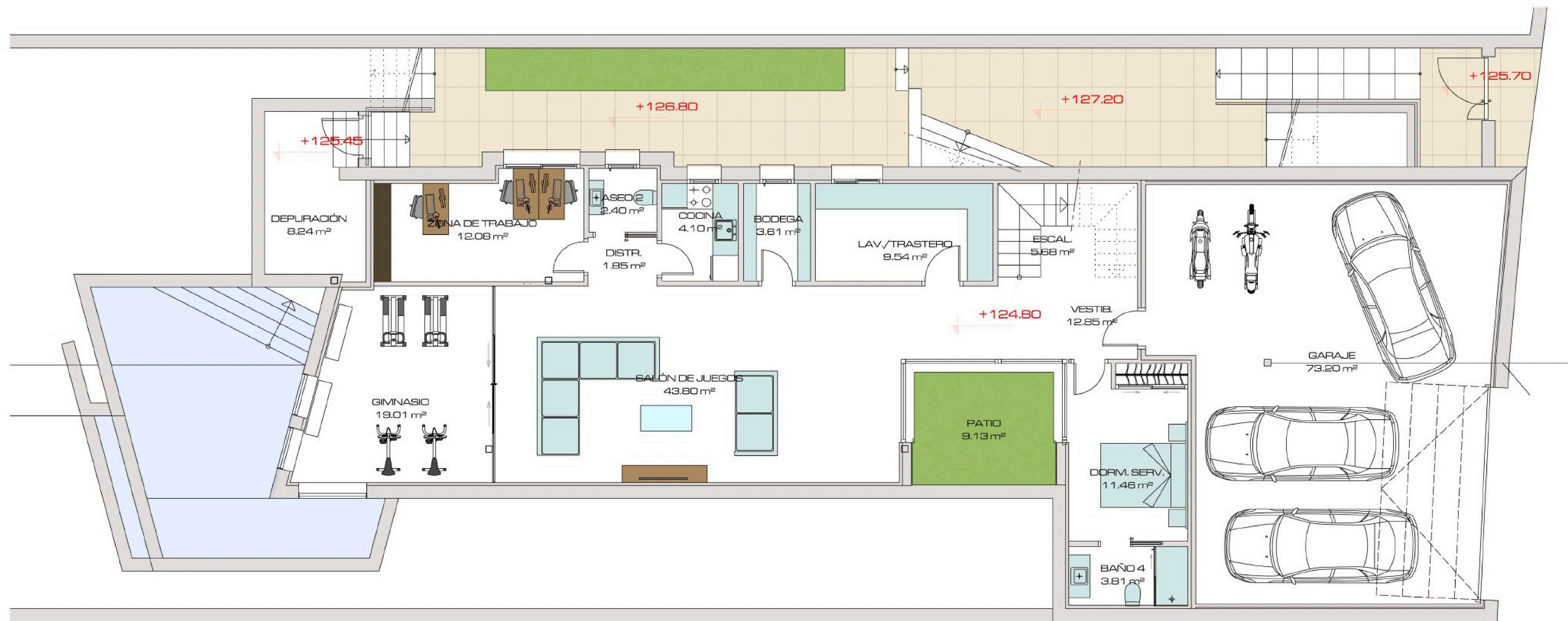
Sup. Parcela: 641,52 m²
 Sup. construida cerrada: 116,95 m²
 Sup. porches cubiertos: 28,28 m²
 Sup.terrazas: 30,24 m²





PARCELA 6.2
CUBIERTA-DISTRIBUCIÓN
 Sup. Parcela: 641,52 m²

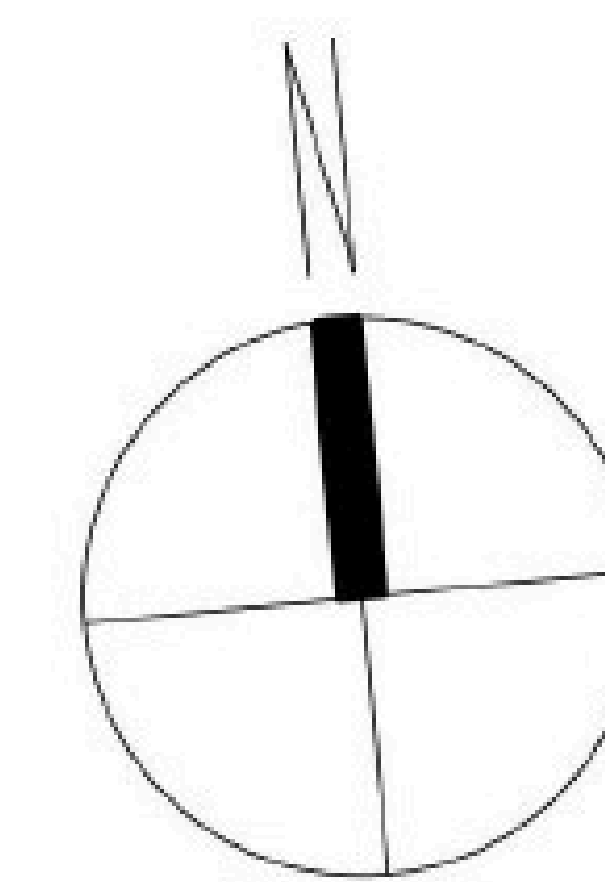
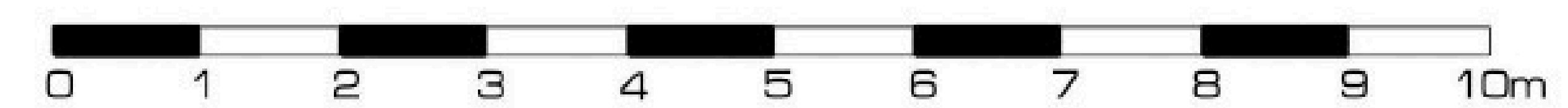




PARCELA 6.2
SÓTANO-DISTRIBUCIÓN

Sup. Parcela: 641,52 m²

Sup. construida cerrada: 261,59 m²



CHRISTIE'S
INTERNATIONAL REAL ESTATE
———— COSTA DEL SOL ————

Where *Luxury* lives

Velázquez, 1, 29602 Marbella, España
+34 951 122 313 | marbella@cire-costadelsol.com

Paseo de Reding, 25, 29016 Málaga, España
+34 951 122 312 | malaga@cire-costadelsol.com