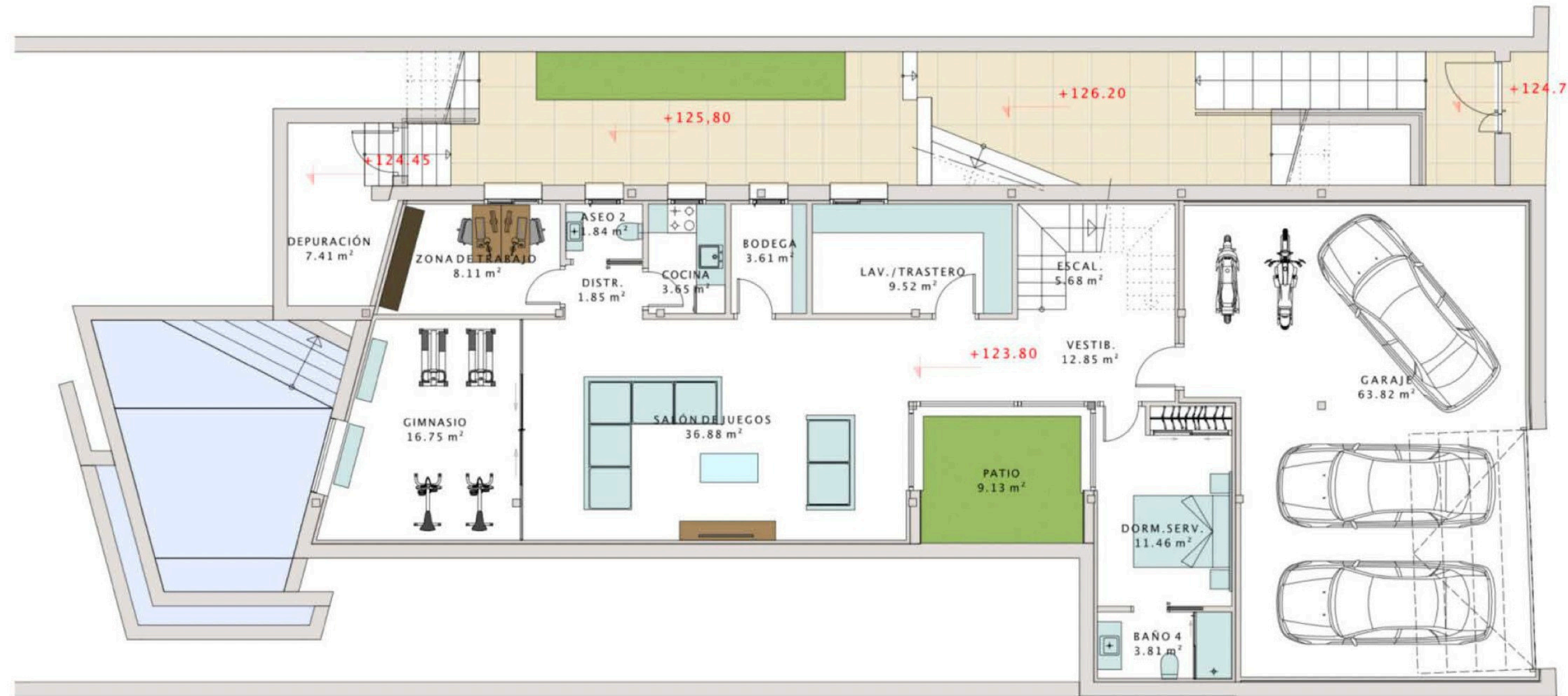


CHRISTIE'S
INTERNATIONAL REAL ESTATE

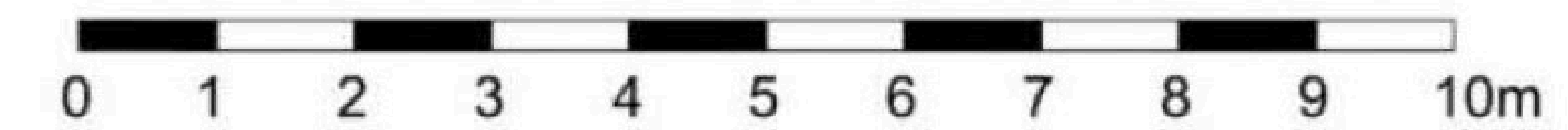
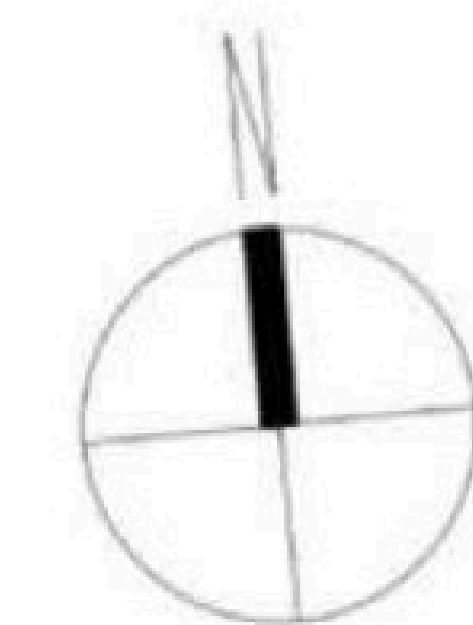
———— COSTA DEL SOL ————

Floor plans Ref. 2423

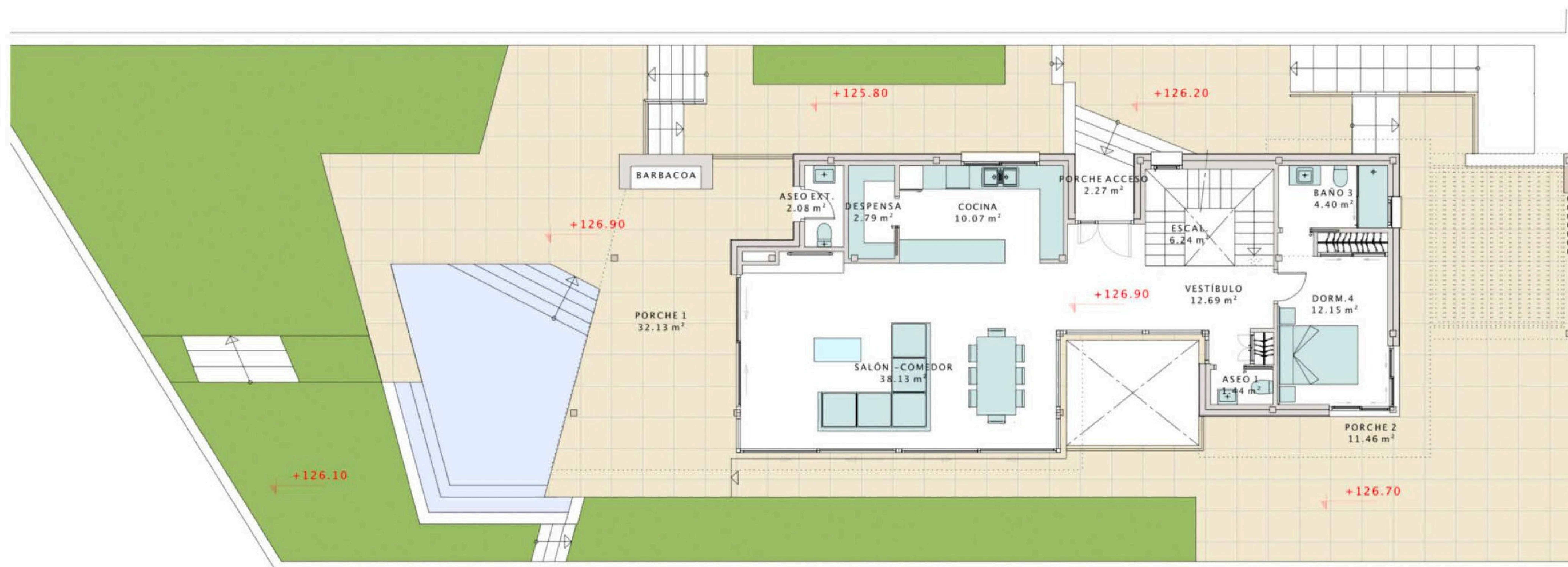


PARCELA 6.3
SÓTANO-DISTRIBUCIÓN

Sup.Parcela: 518,36 m²
Sup.construida cerrada: 234,25 m²

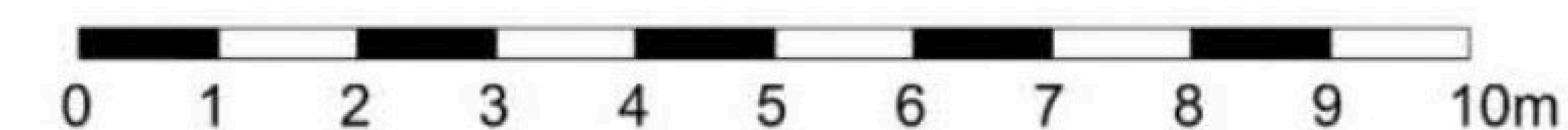
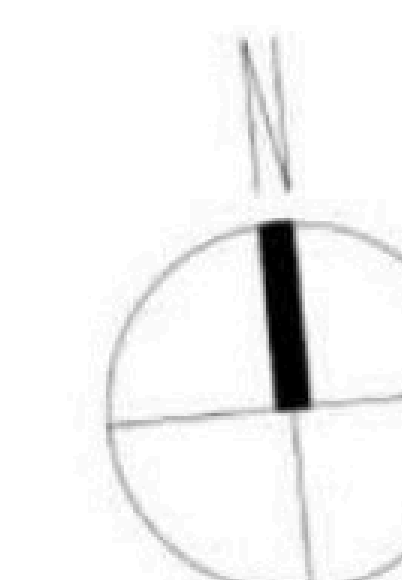


Sup. Total vivienda: 438,57 m²

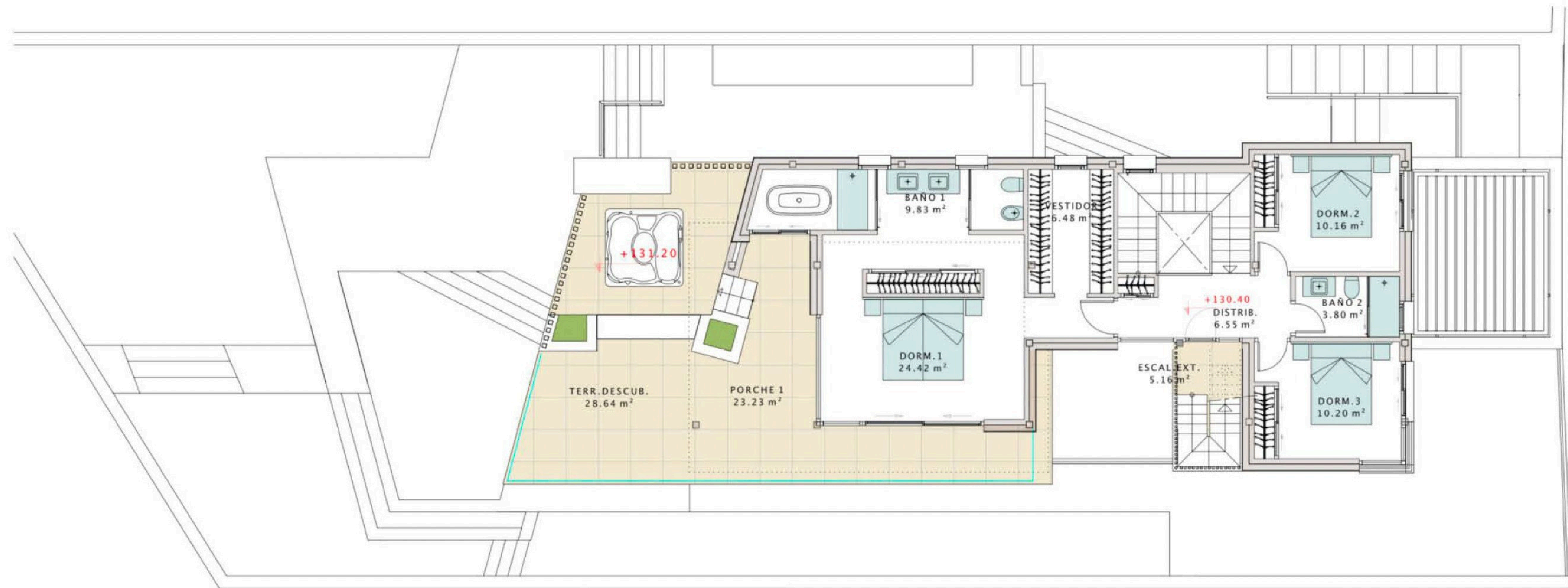


PARCELA 6.3
PLANTA BAJA-DISTRIBUCIÓN

Sup.Parcela: 518,36 m²
 Sup.construida cerrada: 112,33 m²
 Sup.porches cubiertas: 45,86 m²
 Sup. piscina: 22,29 m²

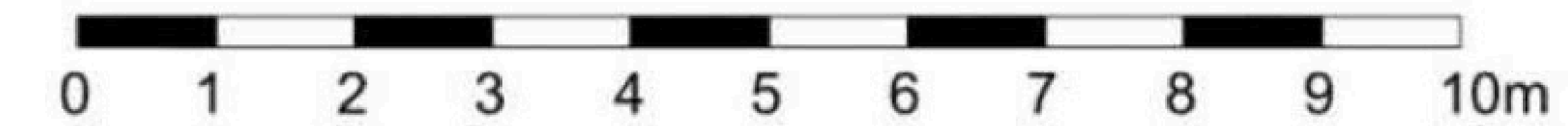
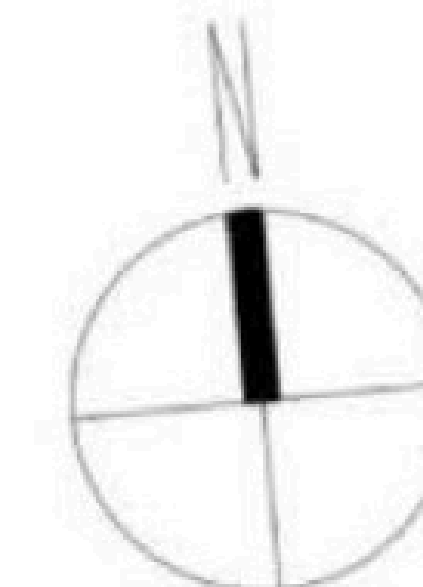


Sup. Total vivienda: 438,57 m²



PARCELA 6.3
PLANTA ALTA-DISTRIBUCIÓN

Sup.Parcela: 518,36 m²
 Sup.construida cerrada: 91,99 m²
 Sup.porches cubiertos: 23,23 m²
 Sup.terrazas: 33,80 m²



Sup. Total vivienda: 438,57 m²

CHRISTIE'S
INTERNATIONAL REAL ESTATE
———— COSTA DEL SOL ————

Where *Luxury* lives

Velázquez, 1, 29602 Marbella, España
+34 951 122 313 | marbella@cire-costadelsol.com

Paseo de Reding, 25, 29016 Málaga, España
+34 951 122 312 | malaga@cire-costadelsol.com