

CHRISTIE'S  
INTERNATIONAL REAL ESTATE

— COSTA DEL SOL —

Floor plans Ref. 2175

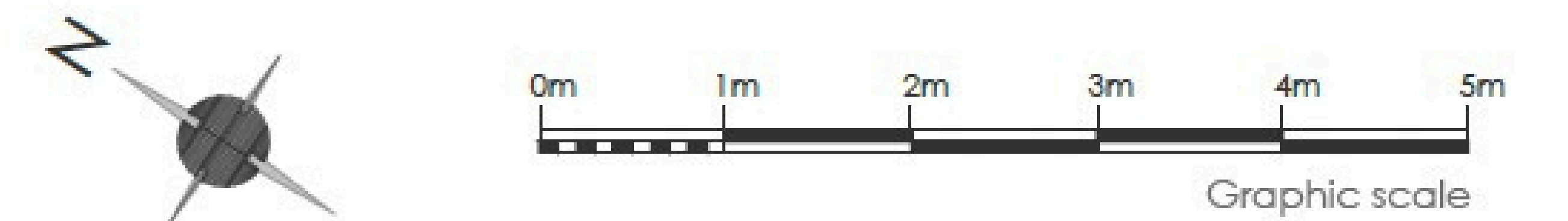
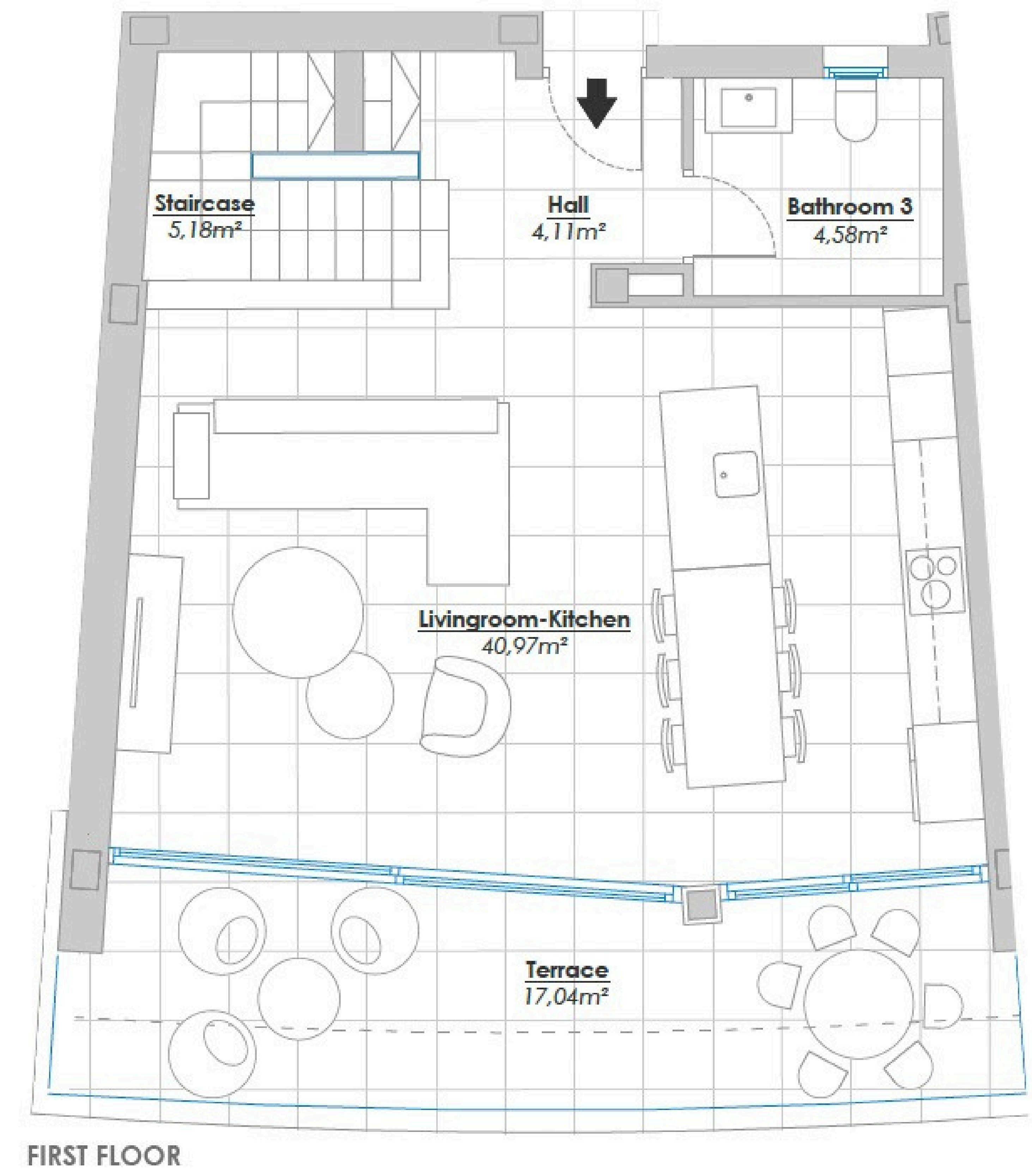
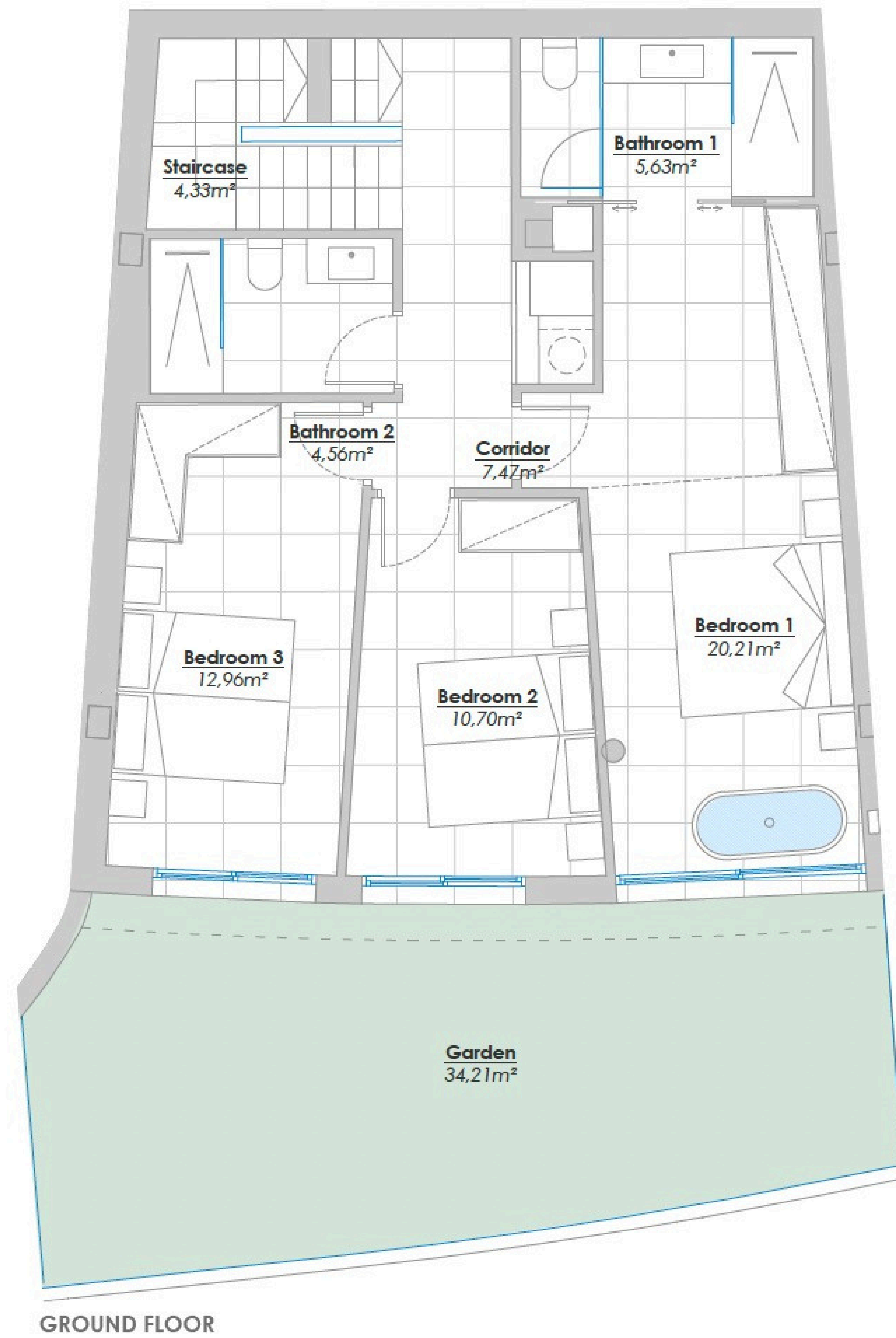
# VILLA 1.1

## USEABLE SURFACE AREA

Indoors	138,79 m <sup>2</sup>
Terraces	76,18 m <sup>2</sup>
Garden	34,21 m <sup>2</sup>

TOTAL NET FLOOR AREA: 152,67 m<sup>2</sup>  
ACCORDING TO ROYAL DECREE 218/2005

**TOTAL BUILT ENCLOSED AREA: 174,93 m<sup>2</sup>**



(\* This plan may be modified depending on progress of the development. The furniture shown is purely for decorative purposes. The project manager reserves the right to make the necessary changes for any possible functional, aesthetic and legal reasons, without this negatively affecting the quality of the construction. Illustrative dimensions.

CHRISTIE'S  
INTERNATIONAL REAL ESTATE  
———— COSTA DEL SOL ————

Where *Luxury* lives

Velázquez, 1, 29602 Marbella, España  
+34 951 122 313 | marbella@cire-costadelsol.com

Paseo de Reding, 25, 29016 Málaga, España  
+34 951 122 312 | malaga@cire-costadelsol.com