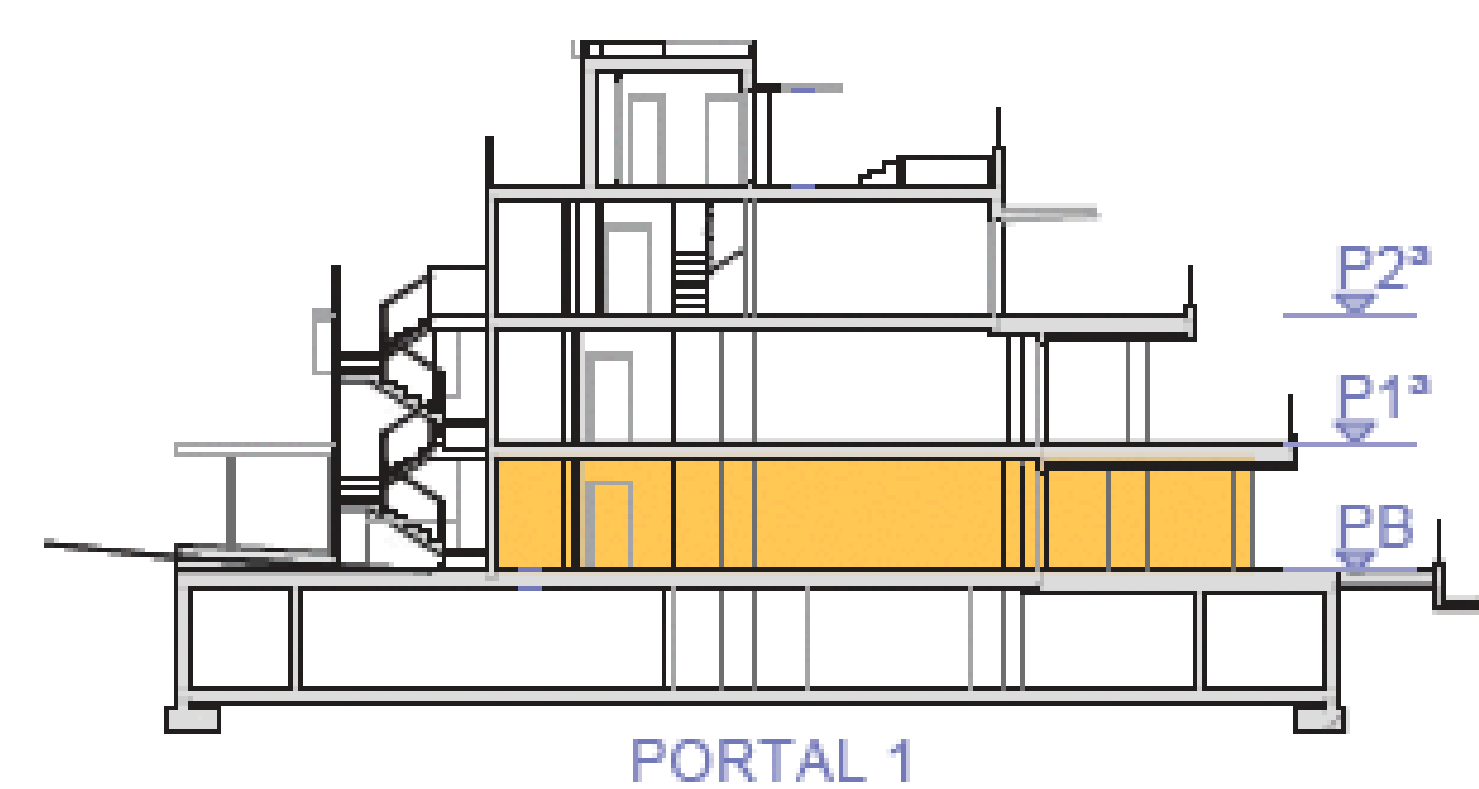
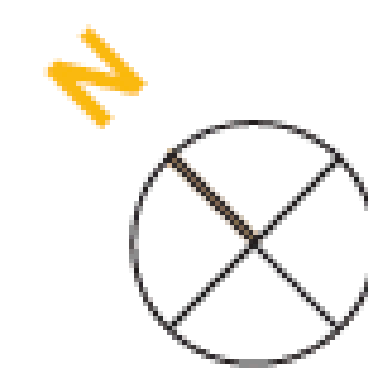
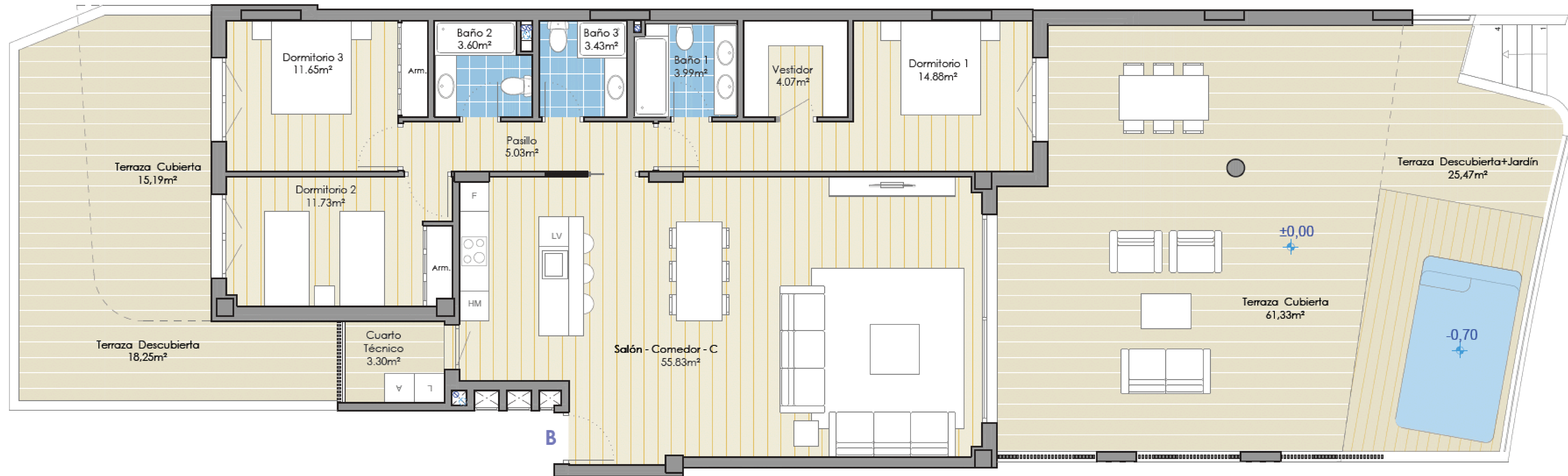


CHRISTIE'S  
INTERNATIONAL REAL ESTATE

———— COSTA DEL SOL ————

Floor plans Ref 2595



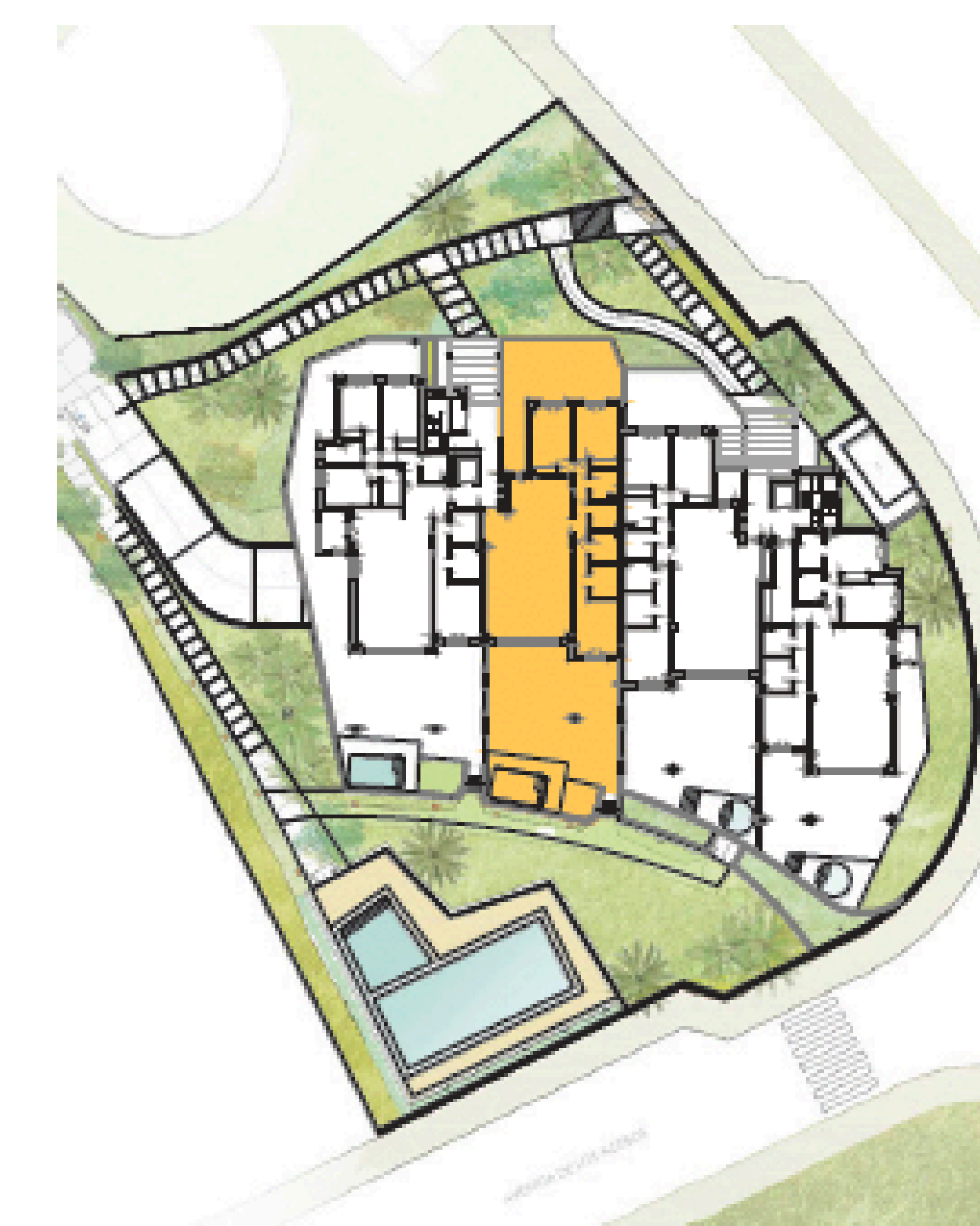
## PORTAL 01

Apartamento PB - B

CUADRO DE SUPERFICIES / AREAS

	SUP. ÚTIL USABLE AREAS	SUP. CONSTRUIDA BUILT AREA
Vivienda / Apartment	114,21 m <sup>2</sup>	129,7 m <sup>2</sup>
Terraza cubierta / Covered terrace	79,82 m <sup>2</sup>	82,73 m <sup>2</sup>
Terraza descubierta / Terrace uncovered	43,72 m <sup>2</sup>	49,1 m <sup>2</sup>
<b>Total</b>	<b>237,75 m<sup>2</sup></b>	<b>261,53 m<sup>2</sup></b>

Superficie Construida Total (interior + exterior + zzcc)	280,03 m <sup>2</sup>
Sup. útil según Decreto 218/2005 Decree 218/2005	125,63 m <sup>2</sup>
Sup. Construida según Decreto 218/2005 Decree 218/2005	159,62 m <sup>2</sup>



CHRISTIE'S  
INTERNATIONAL REAL ESTATE  
———— COSTA DEL SOL ————

Where *Luxury* lives

Velázquez, 1, 29602 Marbella, España  
+34 951 122 313 | marbella@cire-costadelsol.com

Paseo de Reding, 25, 29016 Málaga, España  
+34 951 122 312 | malaga@cire-costadelsol.com