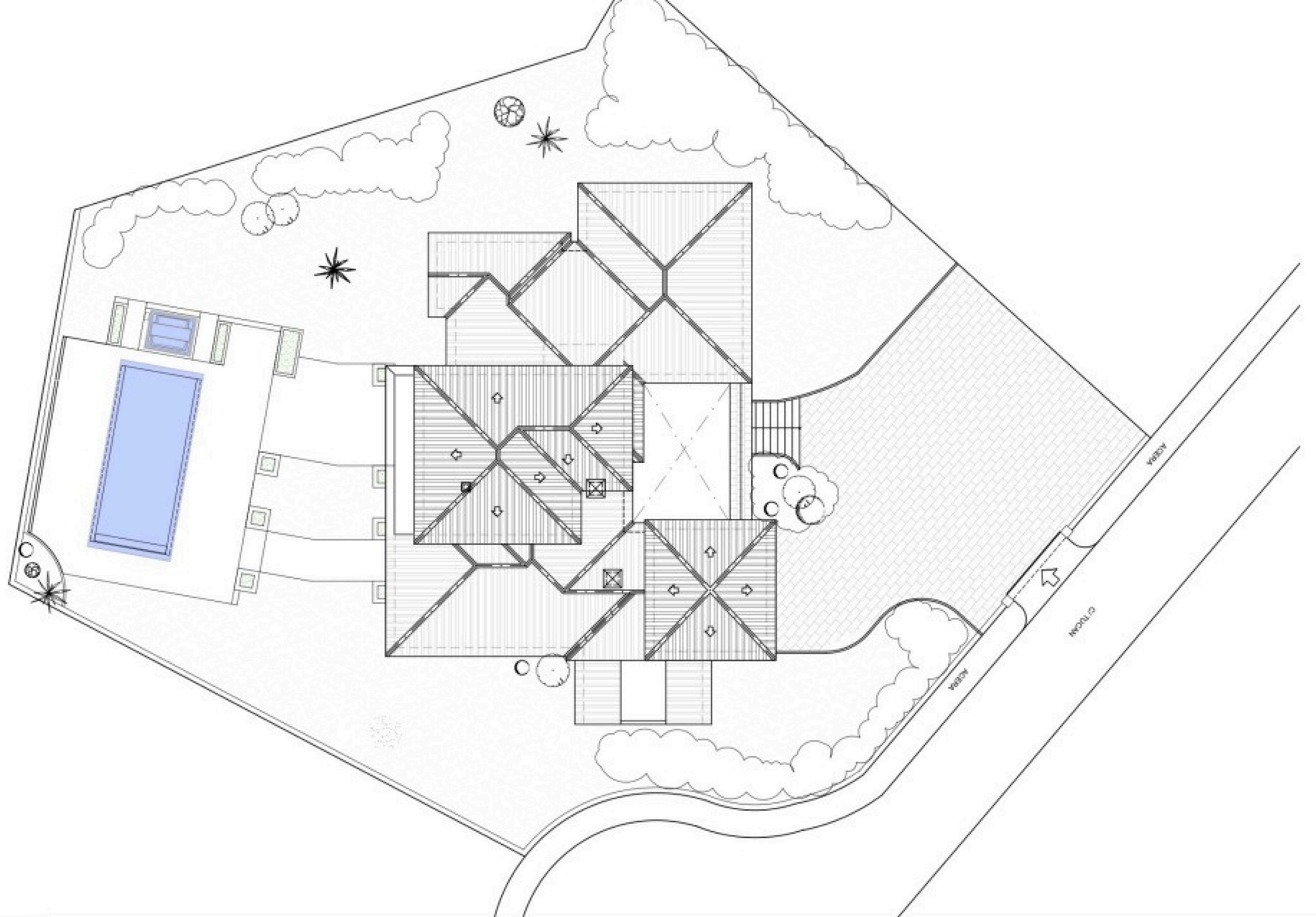


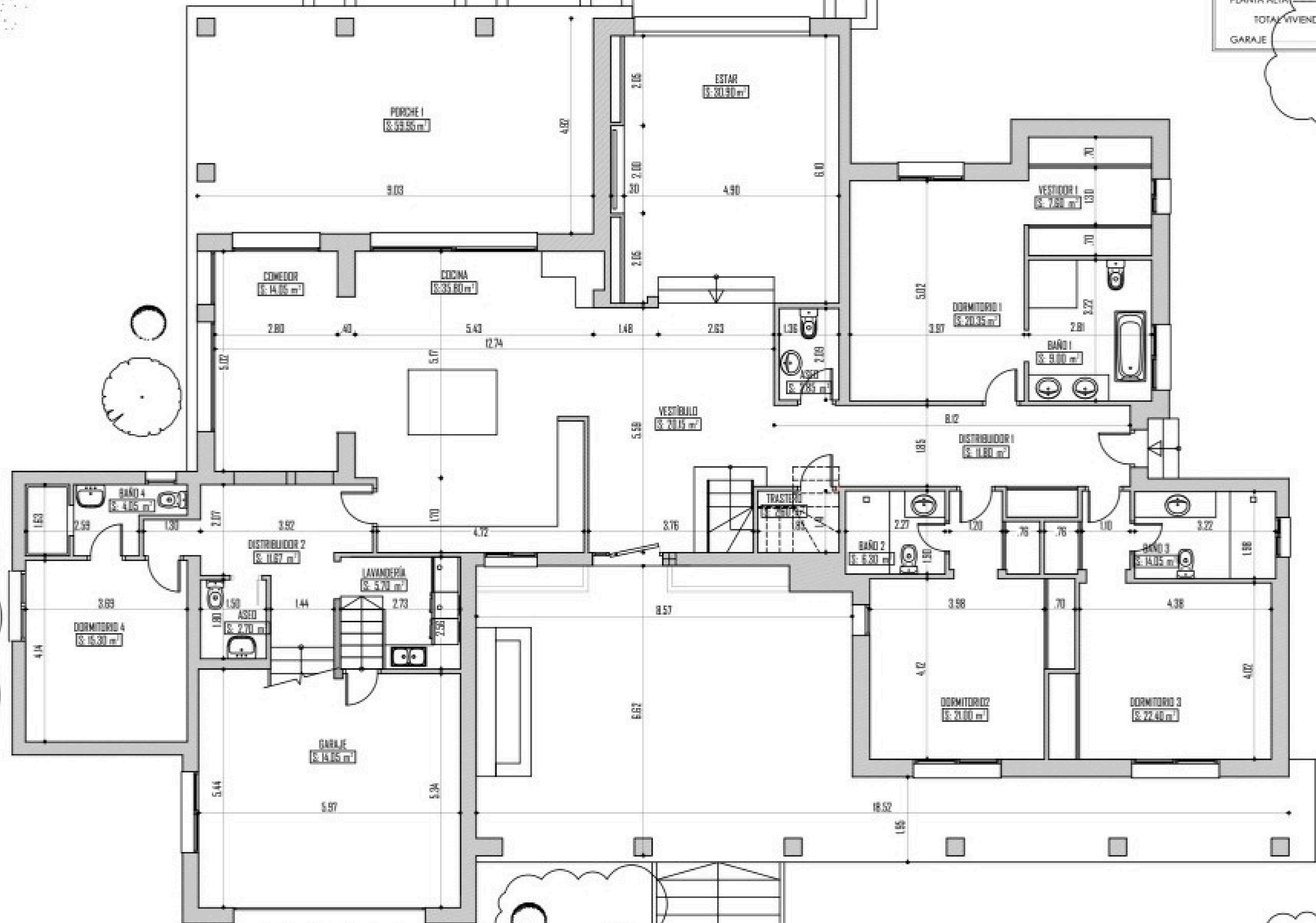
CHRISTIE'S
INTERNATIONAL REAL ESTATE

———— COSTA DEL SOL ————

Floor plans Ref 2415

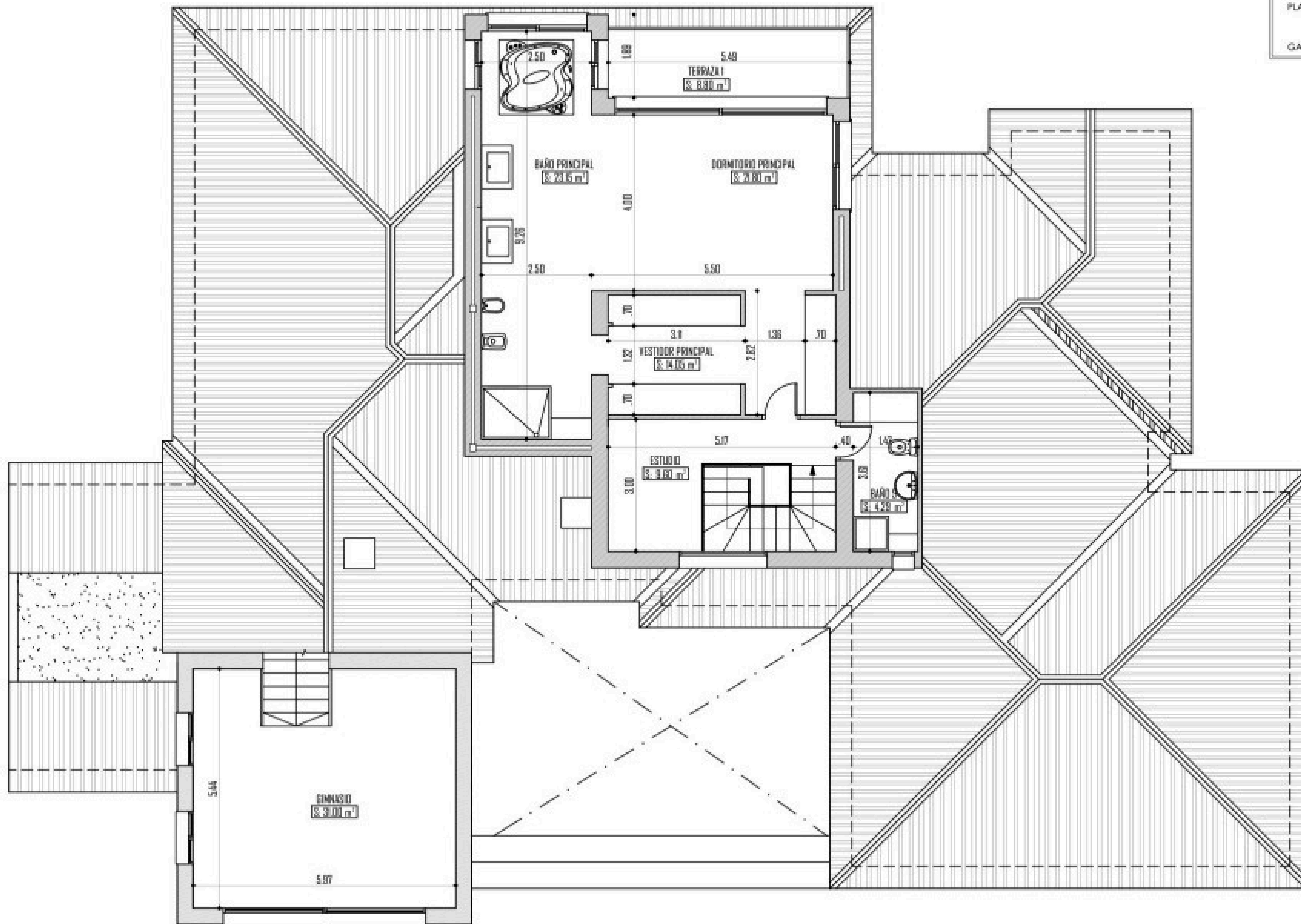


SUPERFICIES CONSTRUIDAS	
VIVIENDA	
PLANTA BAJA	307,25 m ²
PLANTA ALTA	140,15 m ²
TOTAL VIVIENDA	447,40 m ²
GARAJE	38,50 m ²

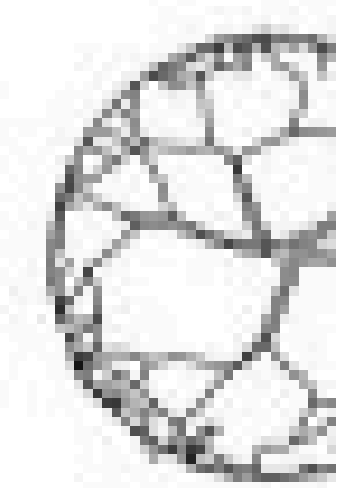
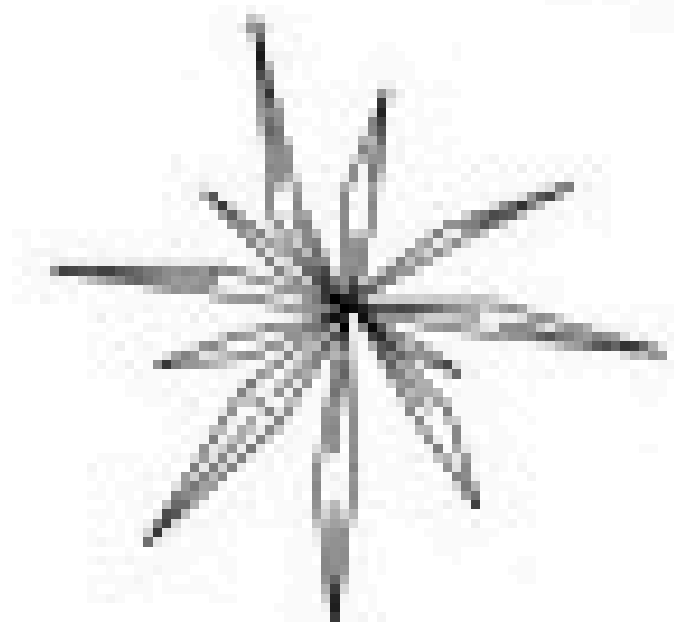
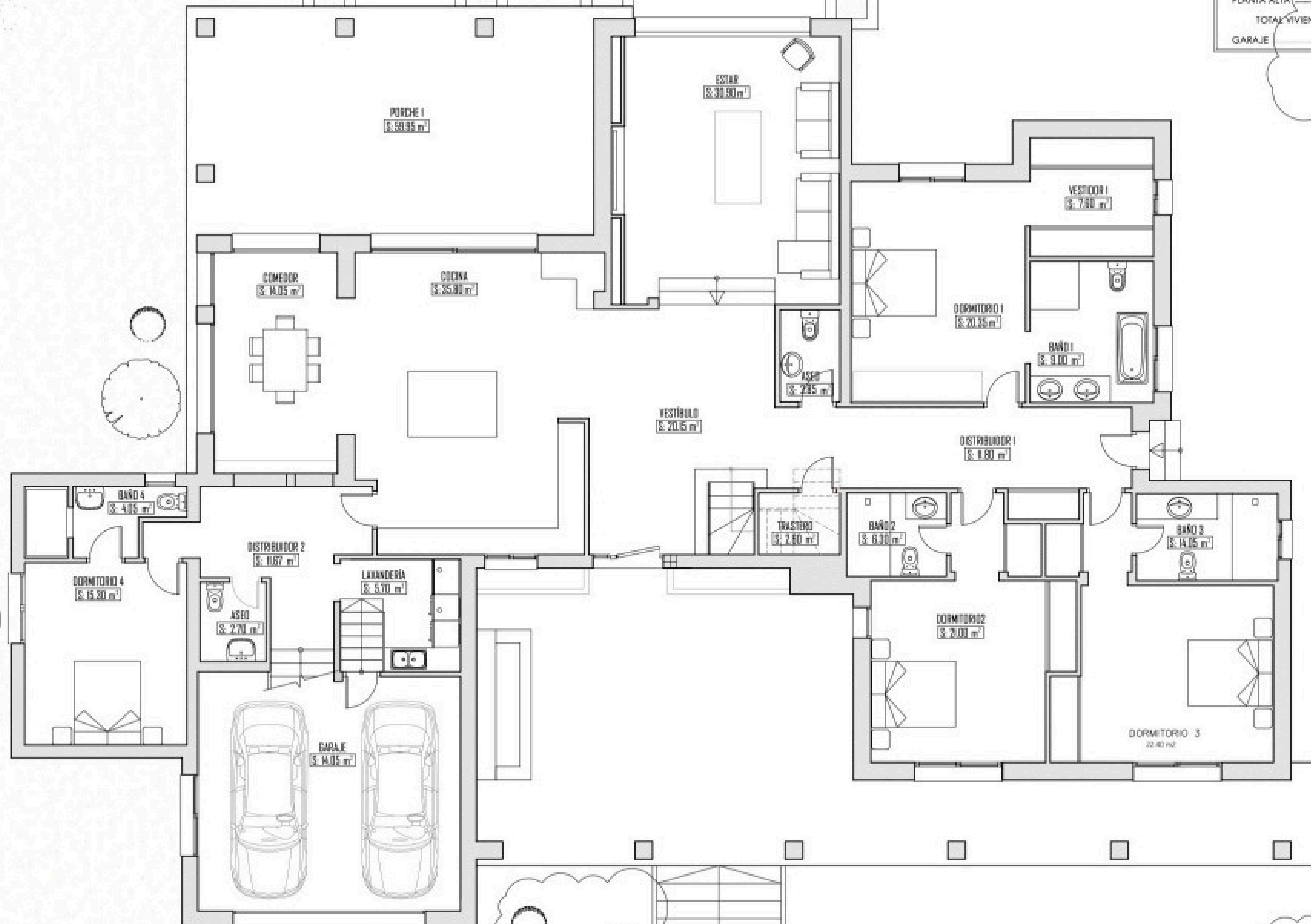


SUPERFICIES CONSTRUIDAS

VIVIENDA	
PLANTA BAJA	307,25 m ²
PLANTA ALTA	140,15 m ²
TOTAL VIVIENDA	447,40 m ²
GARAJE	38,50 m ²

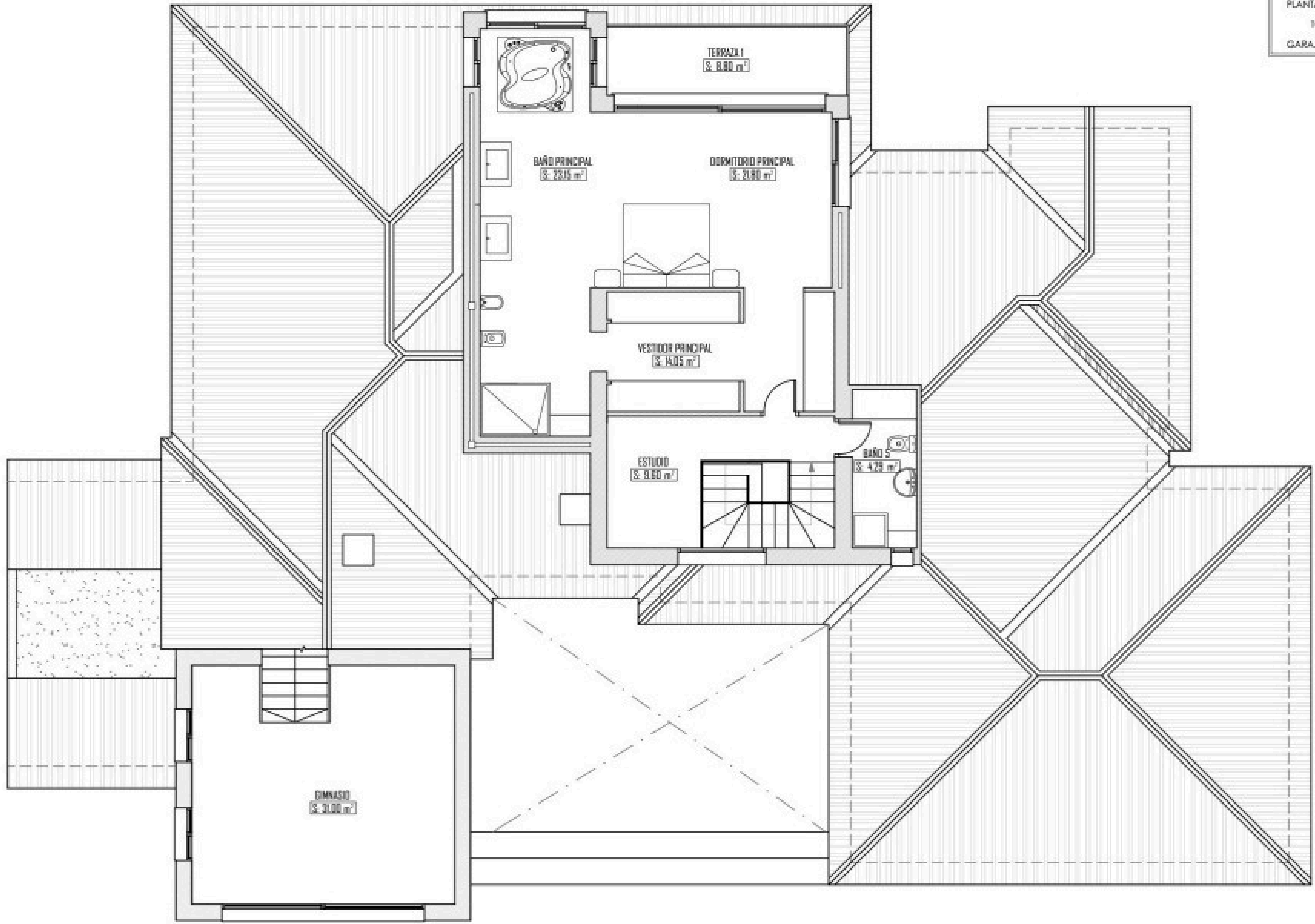


SUPERFICIES CONSTRUIDAS	
VIVIENDA	
PLANTA BAJA	307,25 m ²
PLANTA ALTA	140,15 m ²
TOTAL VIVIENDA	447,40 m ²
GARAJE	38,50 m ²



SUPERFICIES CONSTRUIDAS

VIVIENDA	
PLANTA BAJA	307,25 m ²
PLANTA ALTA	140,15 m ²
TOTAL VIVIENDA	447,40 m ²
GARAJE	38,50 m ²



TERRAZA I
(S. 8,80 m²)

BAÑO PRINCIPAL
(S. 28,16 m²)

DORMITORIO PRINCIPAL
(S. 21,80 m²)

VESTIDOR PRINCIPAL
(S. 14,05 m²)

ESTUDIO
(S. 8,60 m²)

BAÑO S
(S. 4,28 m²)

GIMNASIO
(S. 31,00 m²)

CHRISTIE'S
INTERNATIONAL REAL ESTATE
———— COSTA DEL SOL ————

Where *Luxury* lives

Velázquez, 1, 29602 Marbella, España
+34 951 122 313 | marbella@cire-costadelsol.com

Paseo de Reding, 25, 29016 Málaga, España
+34 951 122 312 | malaga@cire-costadelsol.com