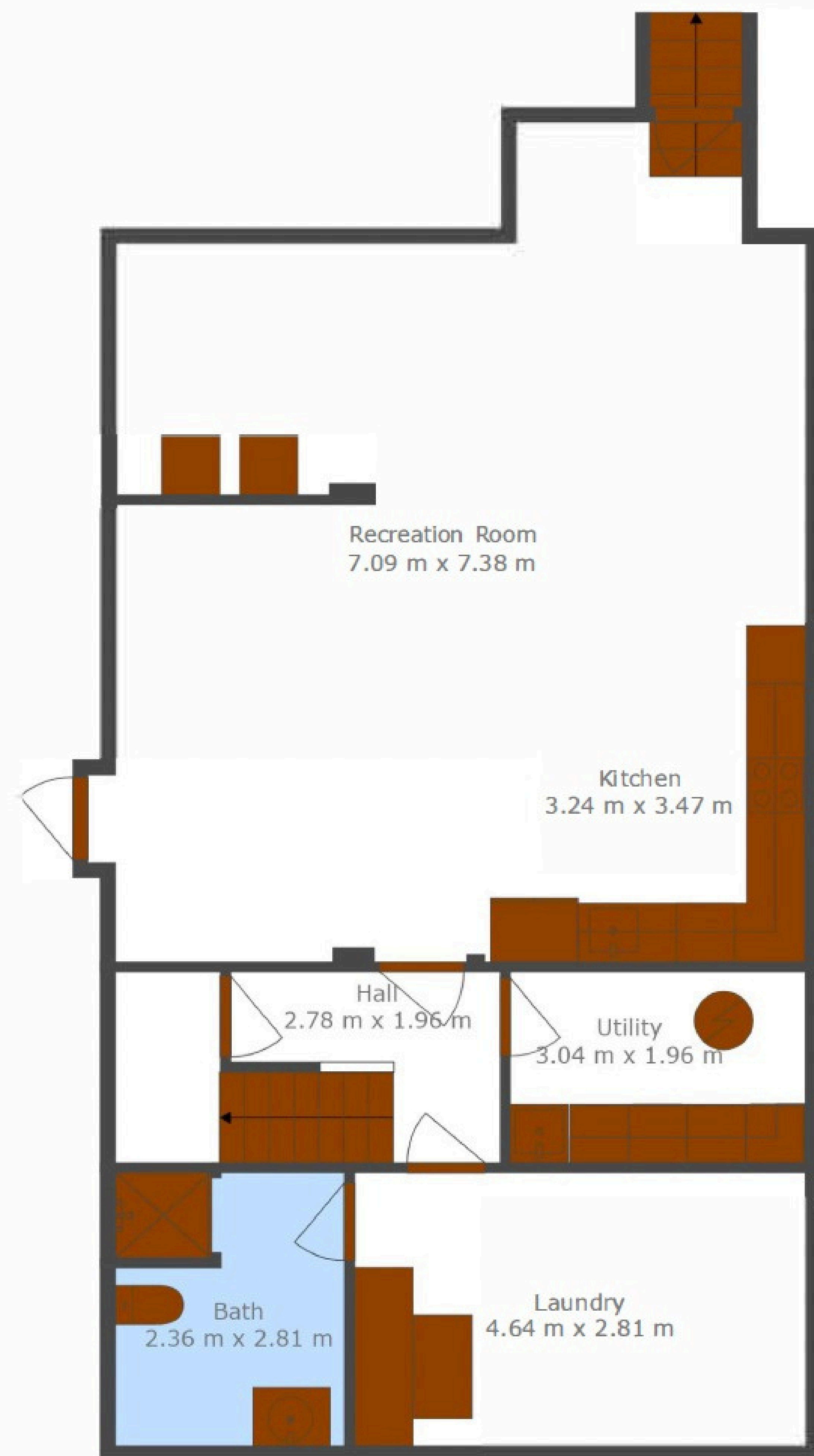


CHRISTIE'S
INTERNATIONAL REAL ESTATE

———— COSTA DEL SOL ————

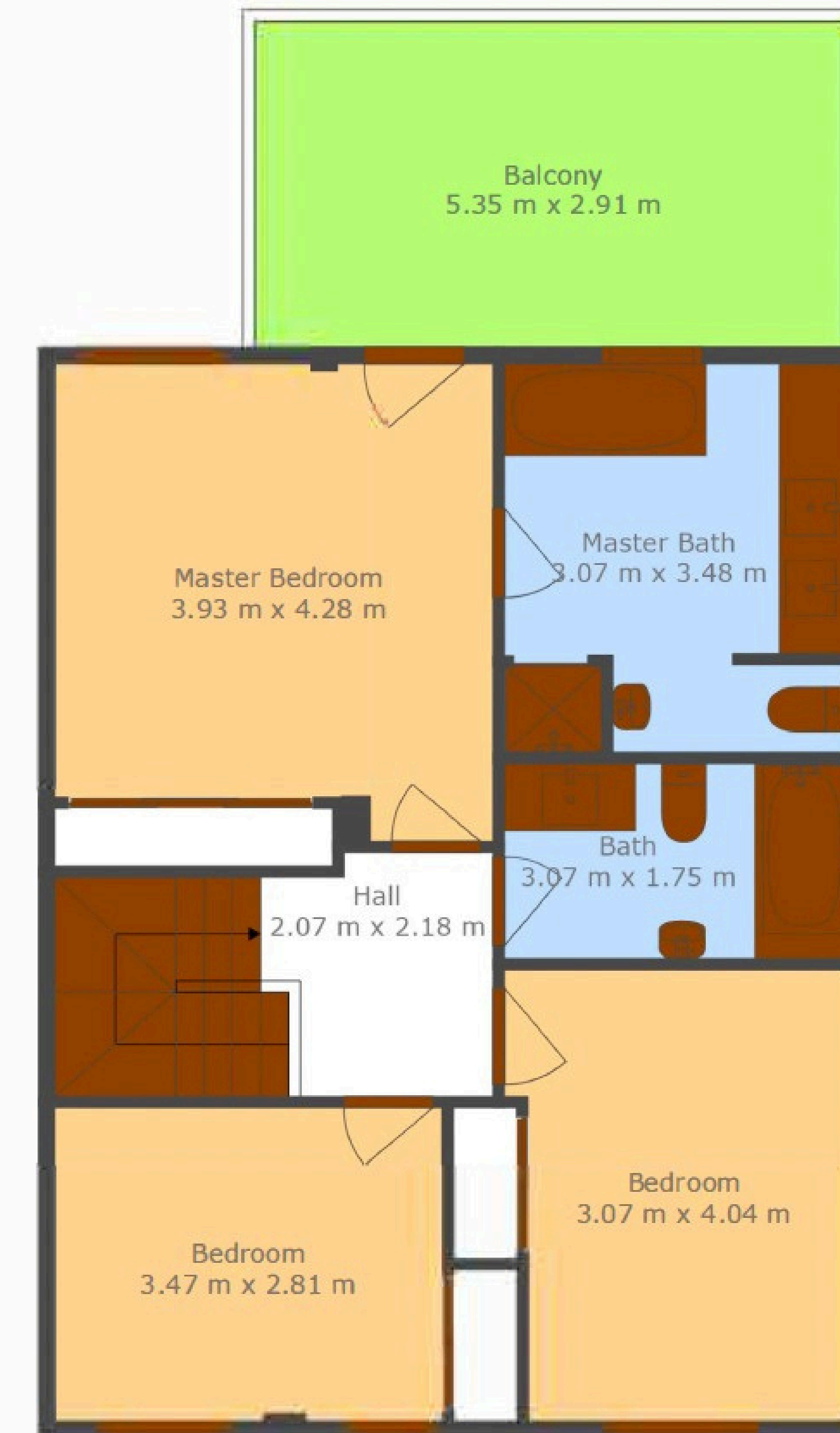
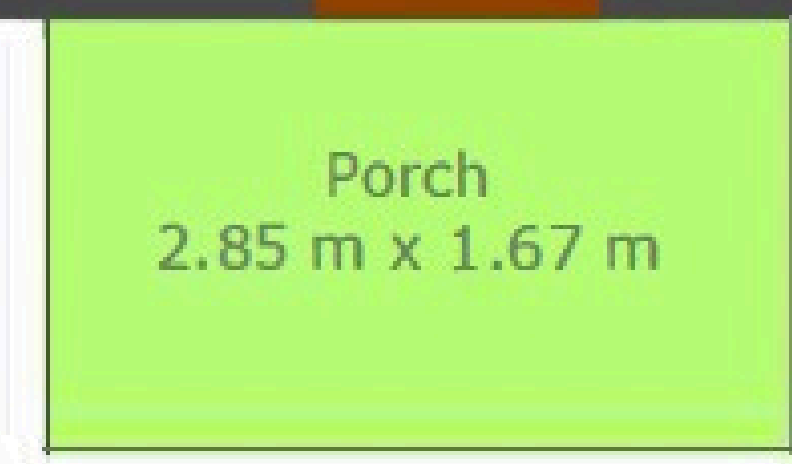
Floor plans Ref 2542



Floor 1



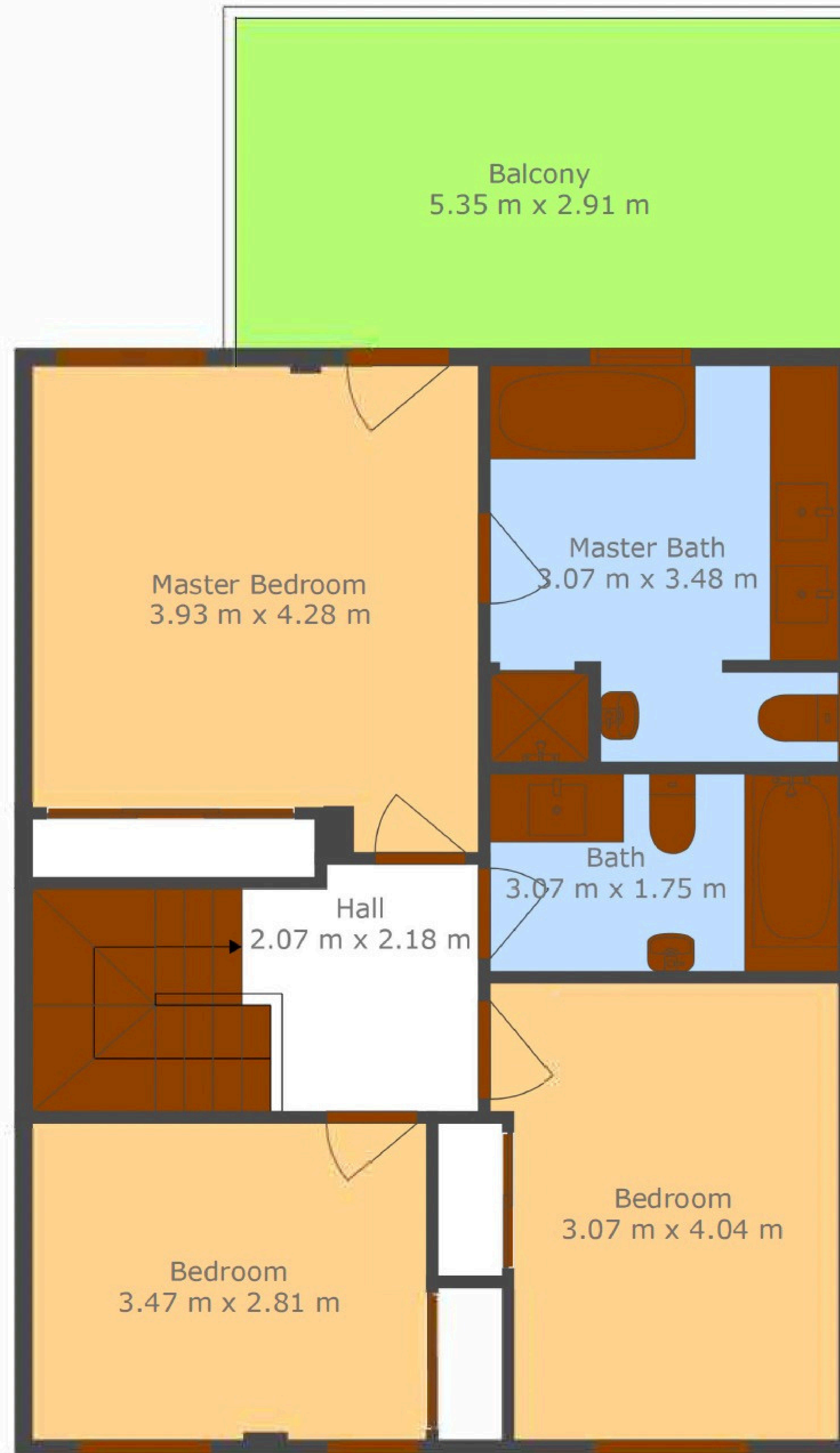
Floor 2



Floor 3

TOTAL: 225 m2
 Below Ground: 91 m2, FLOOR 2: 67 m2, FLOOR 3: 67 m2
 EXCLUDED AREAS: PATIO: 61 m2, PORCH: 5 m2, BALCONY: 16 m2

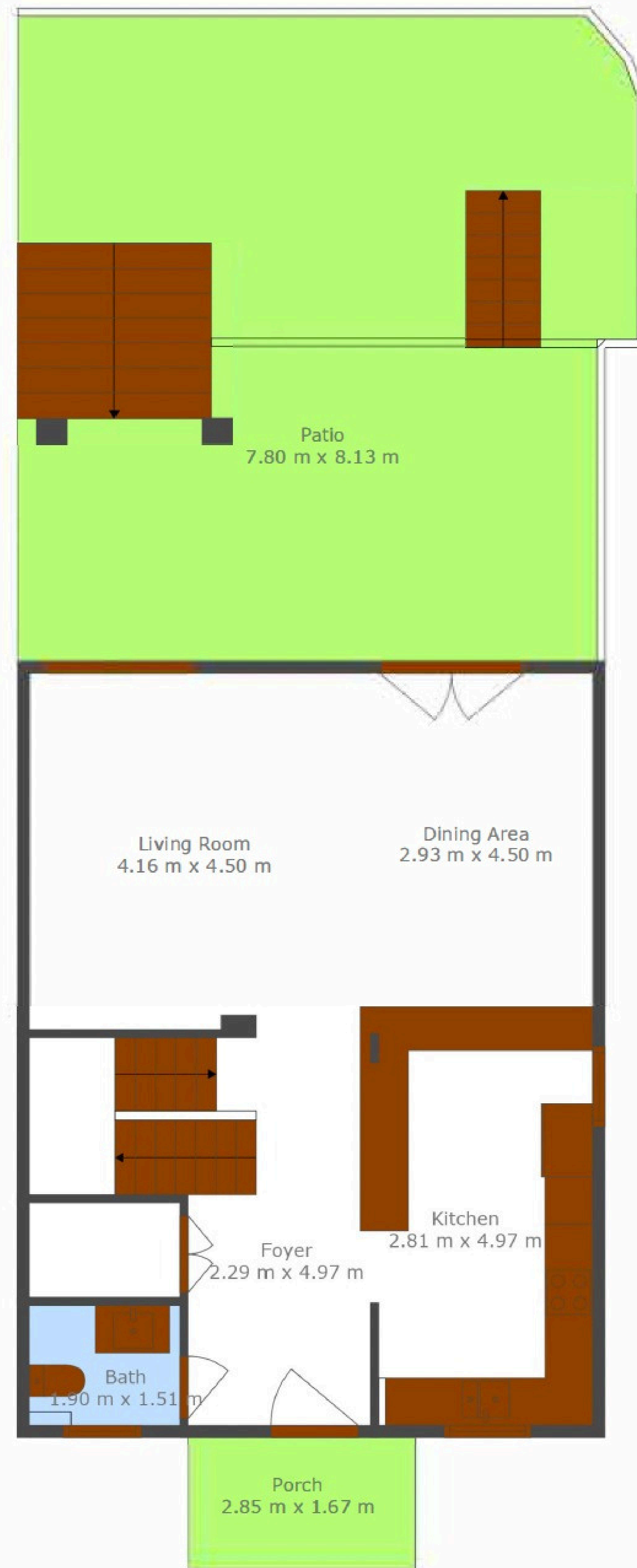
Measurements Taken By Crl With An Accuracy Of 99%. For More Detail Contact Crl



TOTAL: 225 m2

Below Ground: 91 m2, FLOOR 2: 67 m2, FLOOR 3: 67 m2
EXCLUDED AREAS: PATIO: 61 m2, PORCH: 5 m2, BALCONY: 16 m2

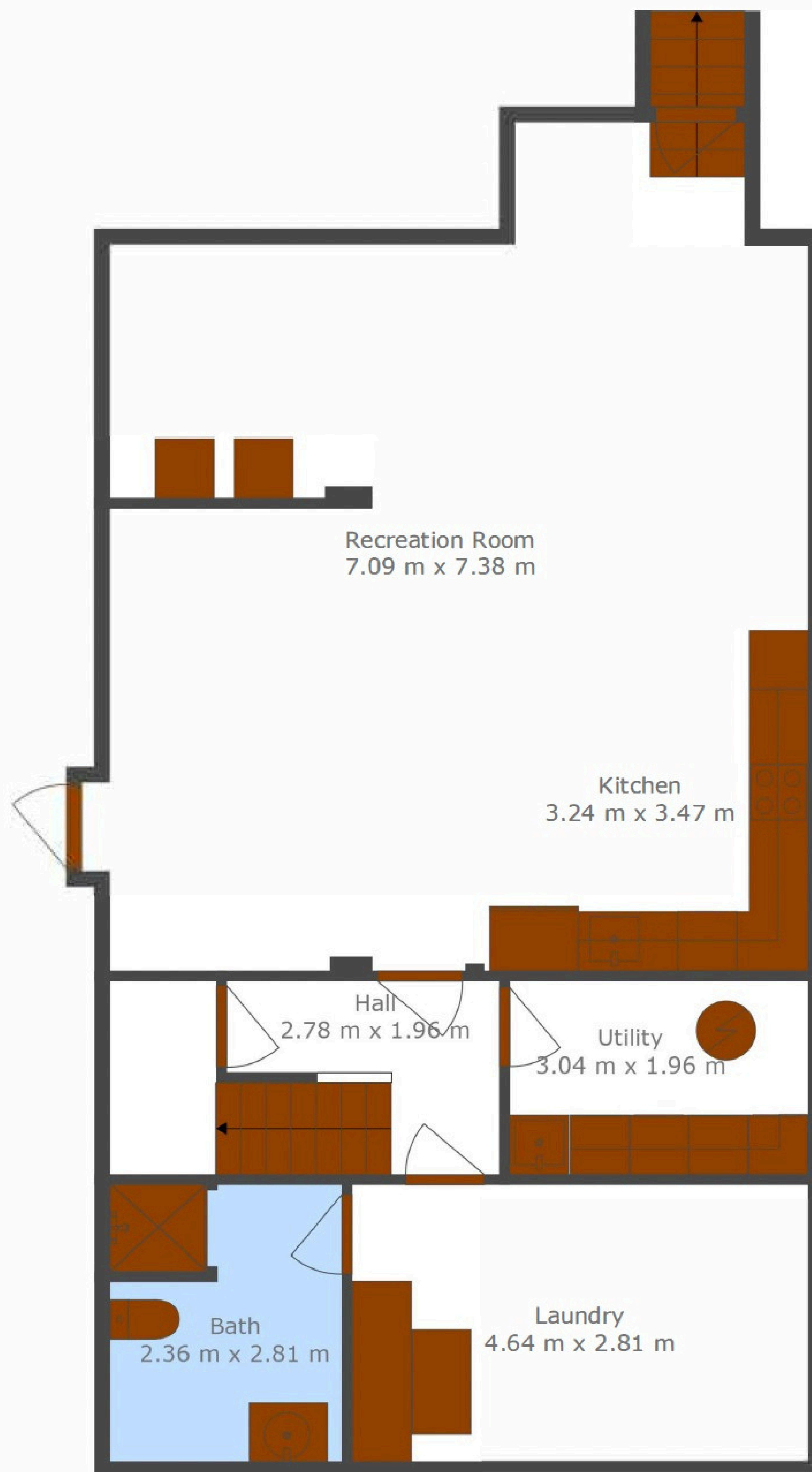
Measurements Taken By Crl With An Accuracy Of 99%. For More Detail Contact Crl



TOTAL: 225 m2

Below Ground: 91 m2, FLOOR 2: 67 m2, FLOOR 3: 67 m2
 EXCLUDED AREAS: PATIO: 61 m2, PORCH: 5 m2, BALCONY: 16 m2

Measurements Taken By Cri With An Accuracy Of 99%. For More Detail Contact Cri



TOTAL: 225 m2

Below Ground: 91 m2, FLOOR 2: 67 m2, FLOOR 3: 67 m2
EXCLUDED AREAS: PATIO: 61 m2, PORCH: 5 m2, BALCONY: 16 m2

Measurements Taken By CrI With An Accuracy Of 99%. For More Detail Contact CrI

CHRISTIE'S
INTERNATIONAL REAL ESTATE
———— COSTA DEL SOL ————

Where *Luxury* lives

Velázquez, 1, 29602 Marbella, España
+34 951 122 313 | marbella@cire-costadelsol.com

Paseo de Reding, 25, 29016 Málaga, España
+34 951 122 312 | malaga@cire-costadelsol.com