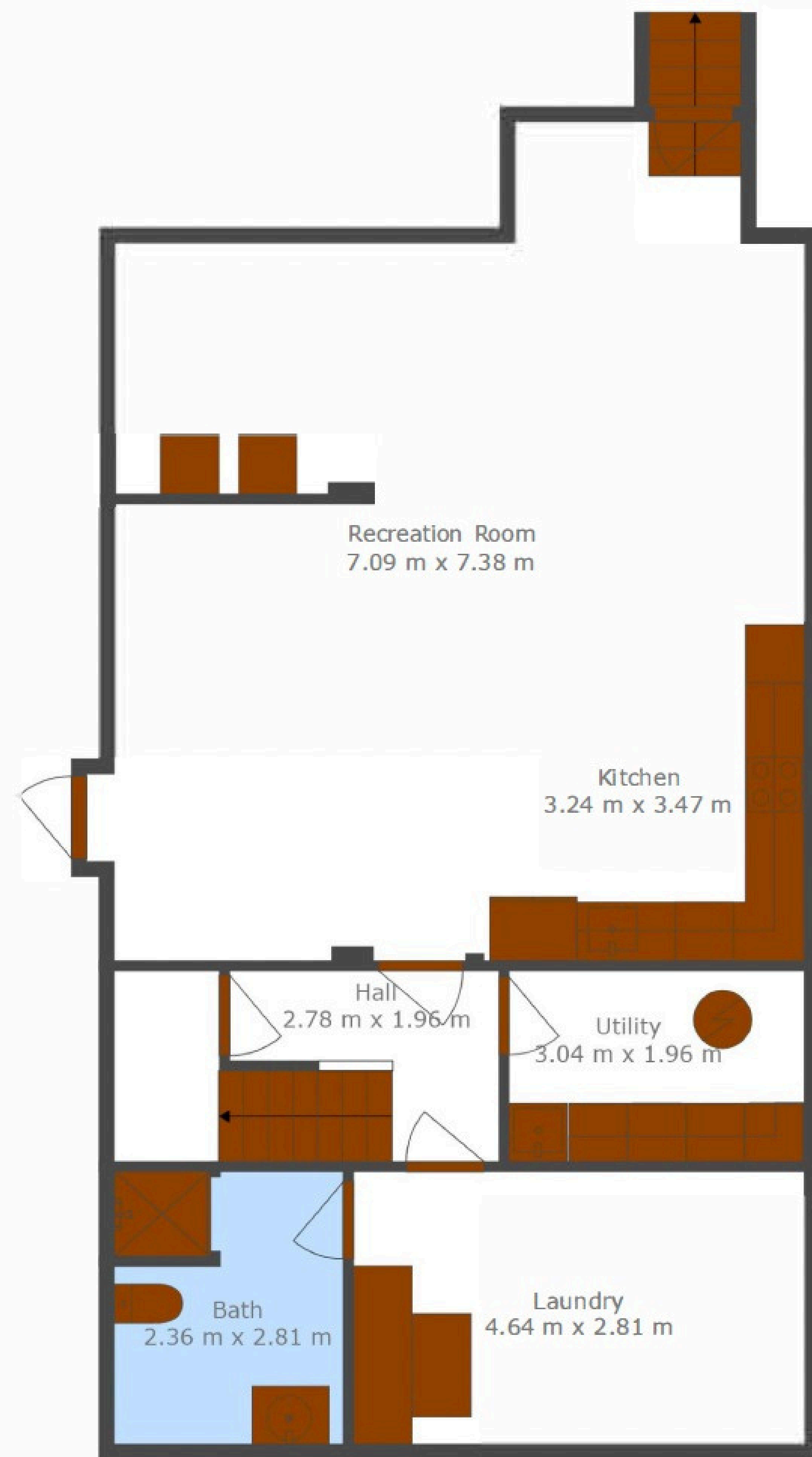


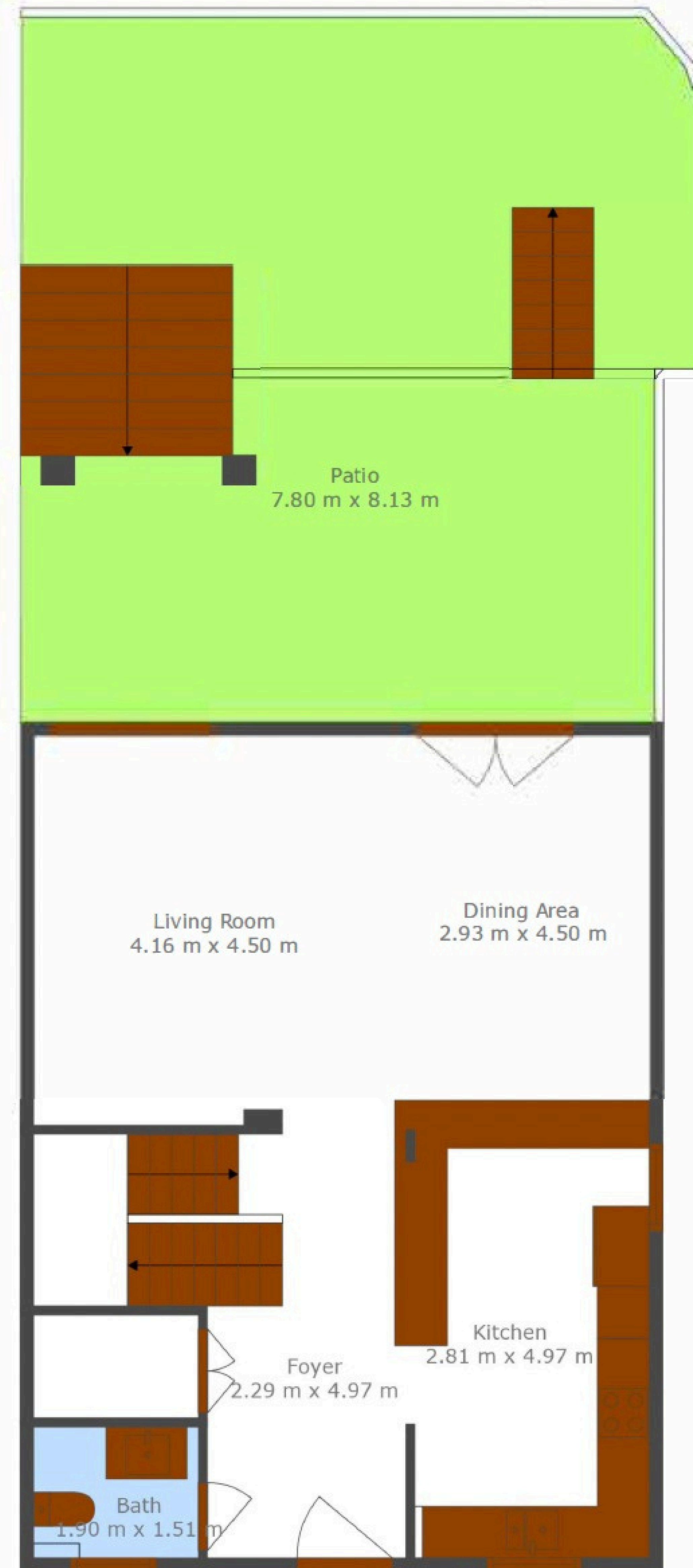
CHRISTIE'S
INTERNATIONAL REAL ESTATE

———— COSTA DEL SOL ————

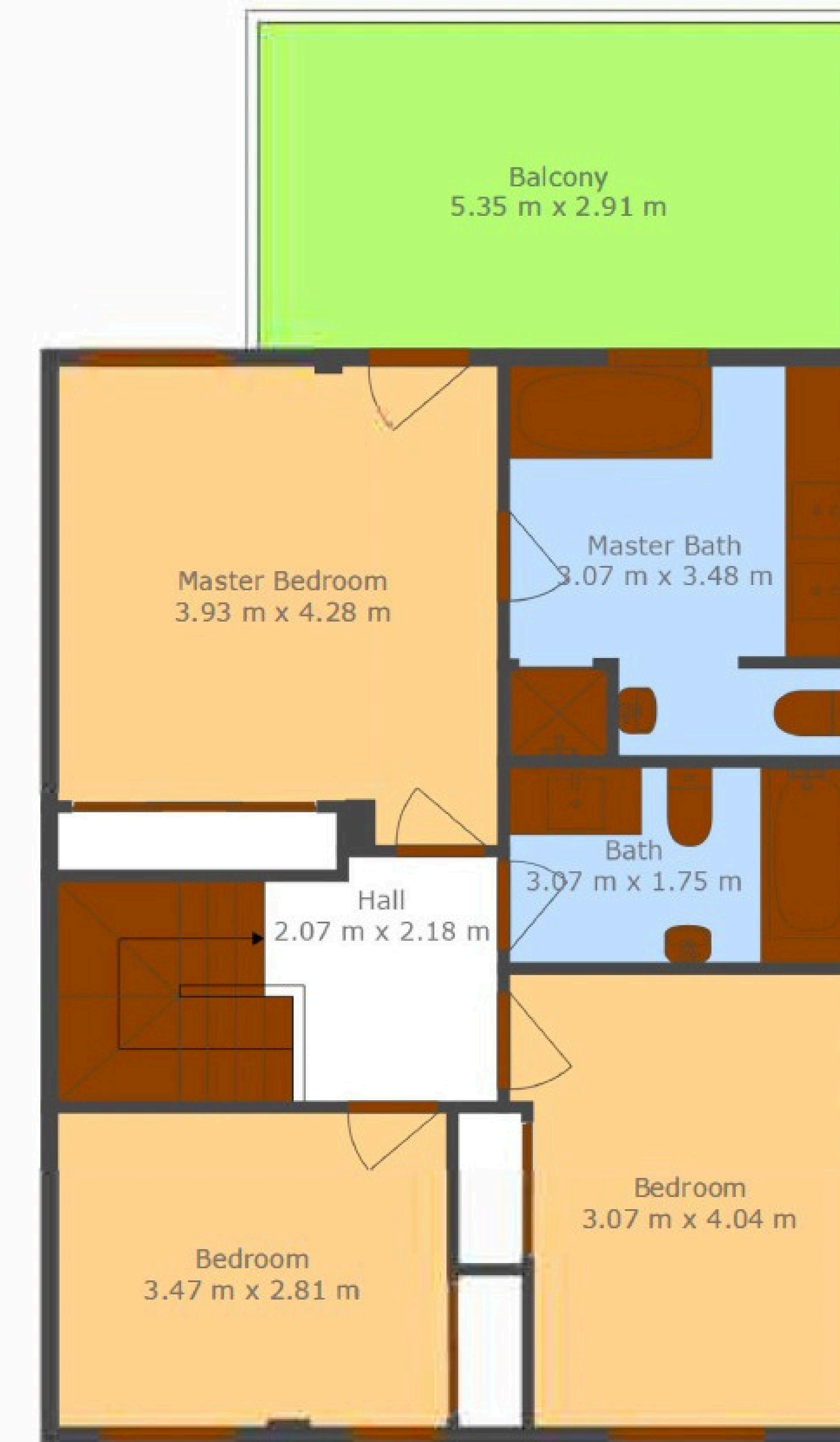
Floor plans Ref 2554



Floor 1



Floor 2

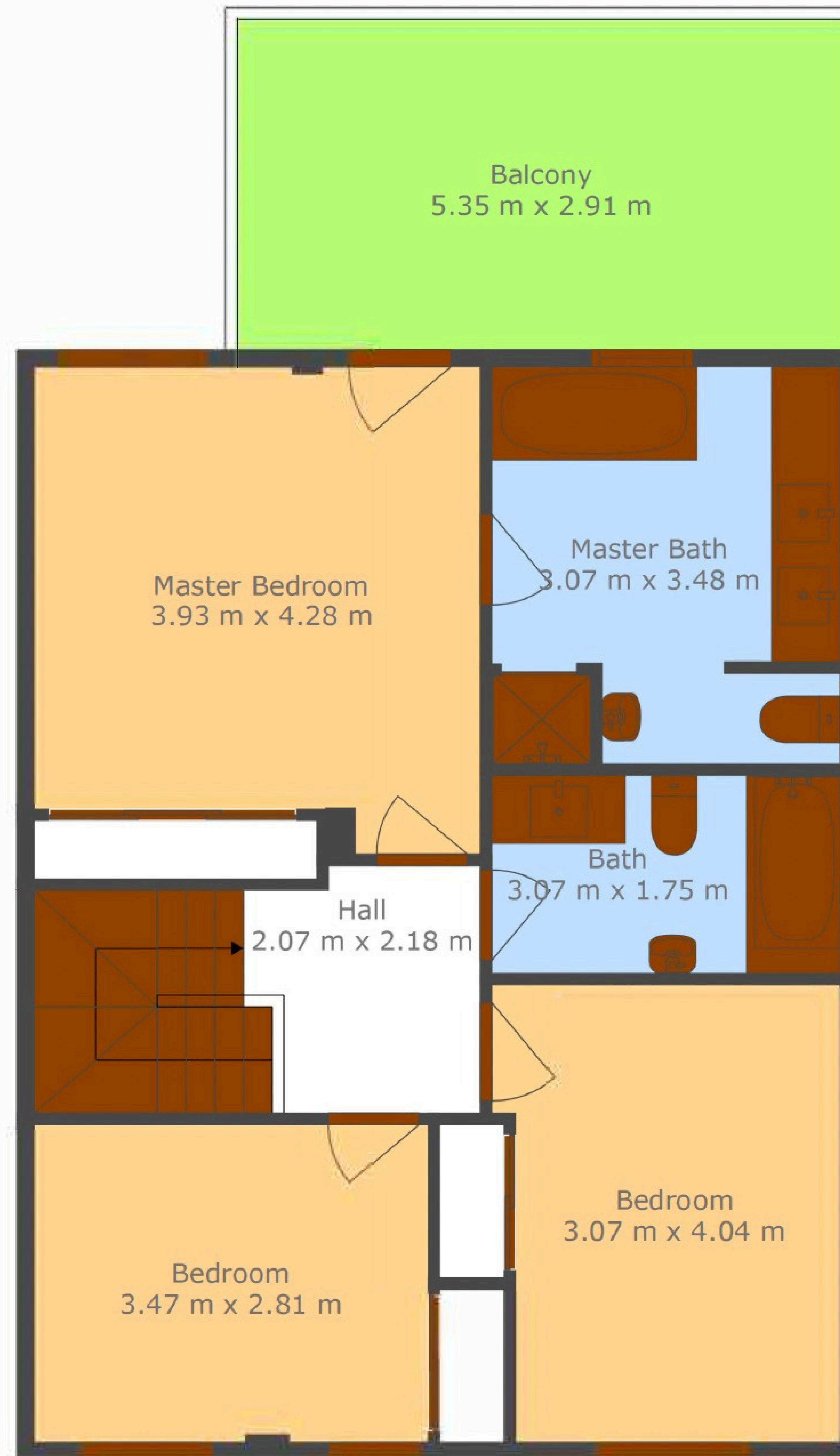


Floor 3



TOTAL: 225 m2
 Below Ground: 91 m2, FLOOR 2: 67 m2, FLOOR 3: 67 m2
 EXCLUDED AREAS: PATIO: 61 m2, PORCH: 5 m2, BALCONY: 16 m2

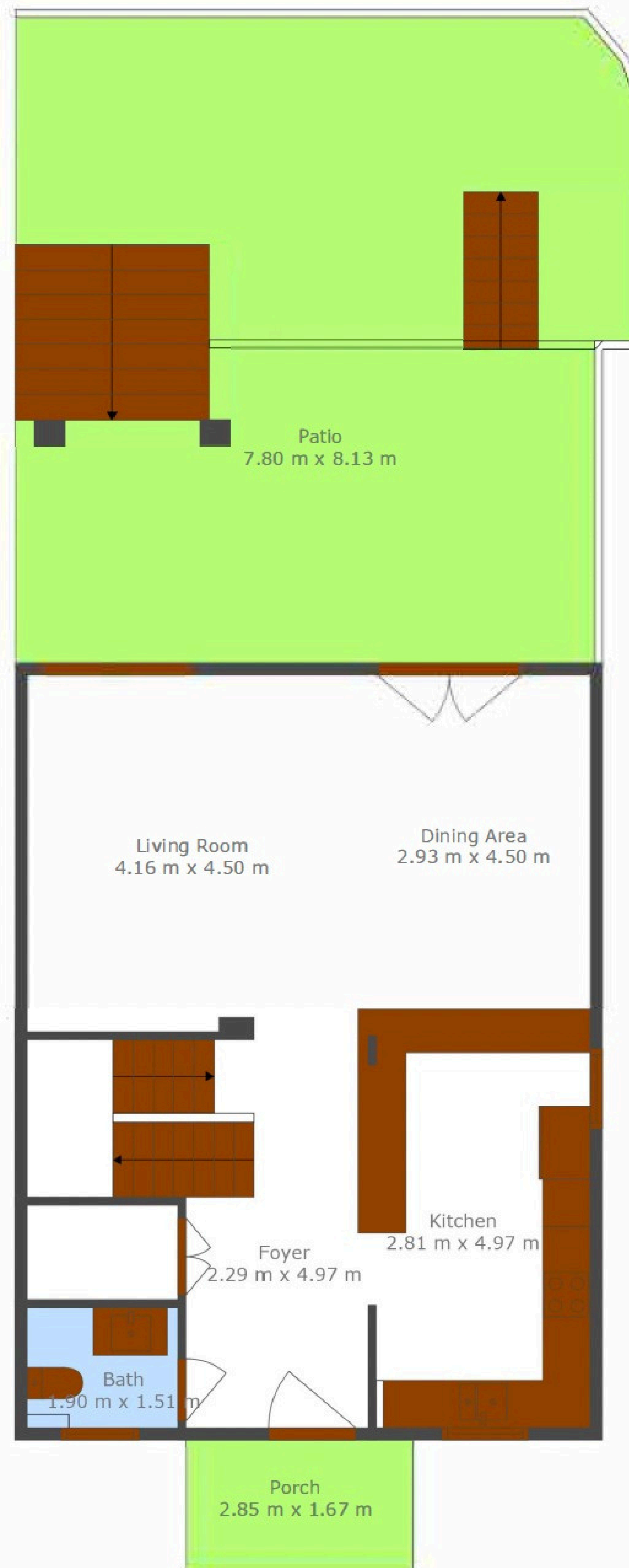
Measurements Taken By Crl With An Accuracy Of 99%. For More Detail Contact Crl



TOTAL: 225 m2

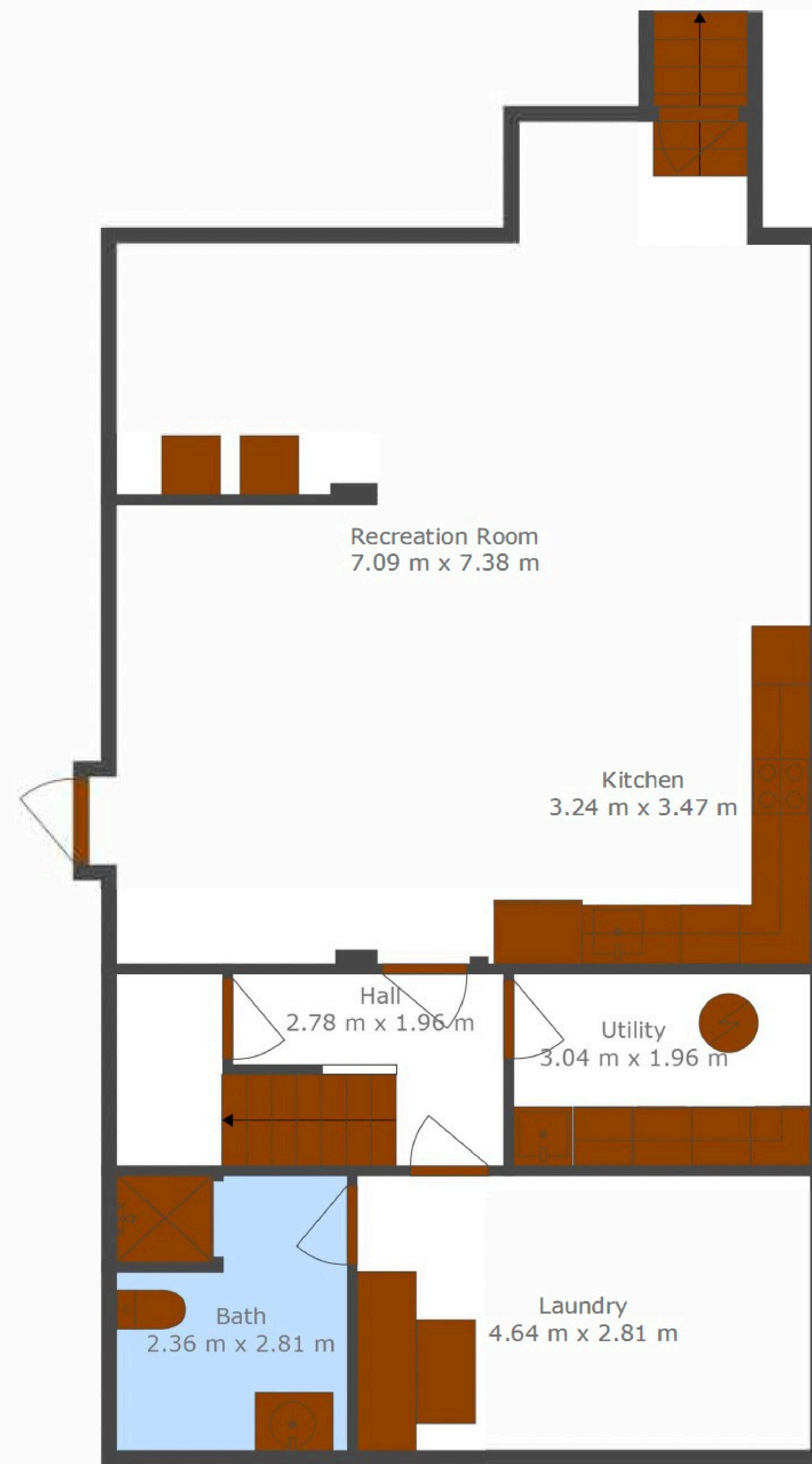
Below Ground: 91 m2, FLOOR 2: 67 m2, FLOOR 3: 67 m2
EXCLUDED AREAS: PATIO: 61 m2, PORCH: 5 m2, BALCONY: 16 m2

Measurements Taken By Crl With An Accuracy Of 99%. For More Detail Contact Crl



TOTAL: 225 m2
Below Ground: 91 m2, FLOOR 2: 67 m2, FLOOR 3: 67 m2
EXCLUDED AREAS: PATIO: 61 m2, PORCH: 5 m2, BALCONY: 16 m2

Measurements Taken By Crl With An Accuracy Of 99%. For More Detail Contact Crl



TOTAL: 225 m2

Below Ground: 91 m2, FLOOR 2: 67 m2, FLOOR 3: 67 m2
EXCLUDED AREAS: PATIO: 61 m2, PORCH: 5 m2, BALCONY: 16 m2

Measurements Taken By CrI With An Accuracy Of 99%. For More Detail Contact CrI



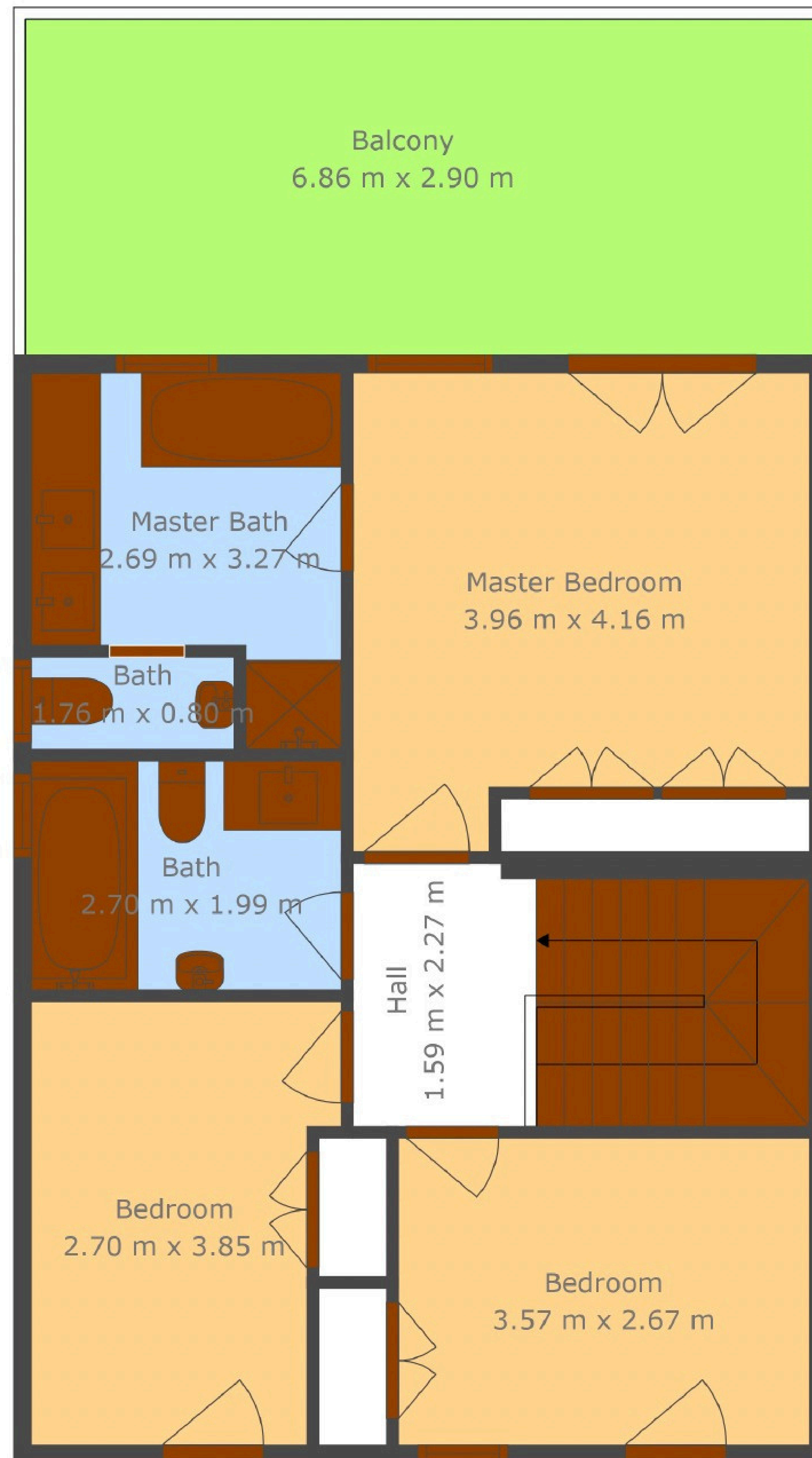
Floor 1

Floor 2

Floor 3

TOTAL: 209 m²
 Below Ground: 83 m², FLOOR 2: 63 m², FLOOR 3: 63 m²
 EXCLUDED AREAS: COVERED PATIO: 24 m², PATIO: 13 m², PORCH: 4 m²,
 BALCONY: 20 m²

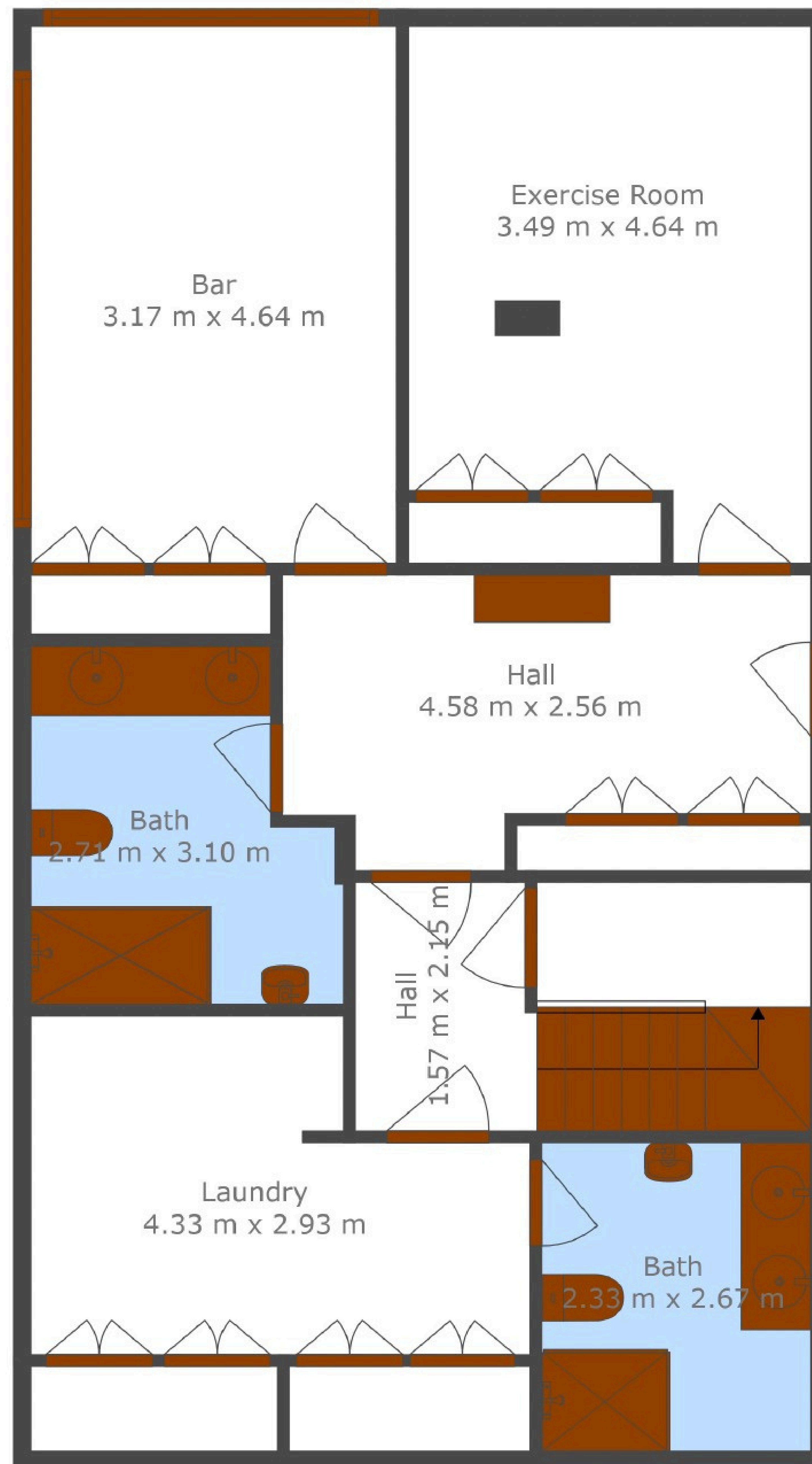
Measurements Taken By Crl With An Accuracy Of 99%. For More Detail Contact Crl



TOTAL: 209 m2

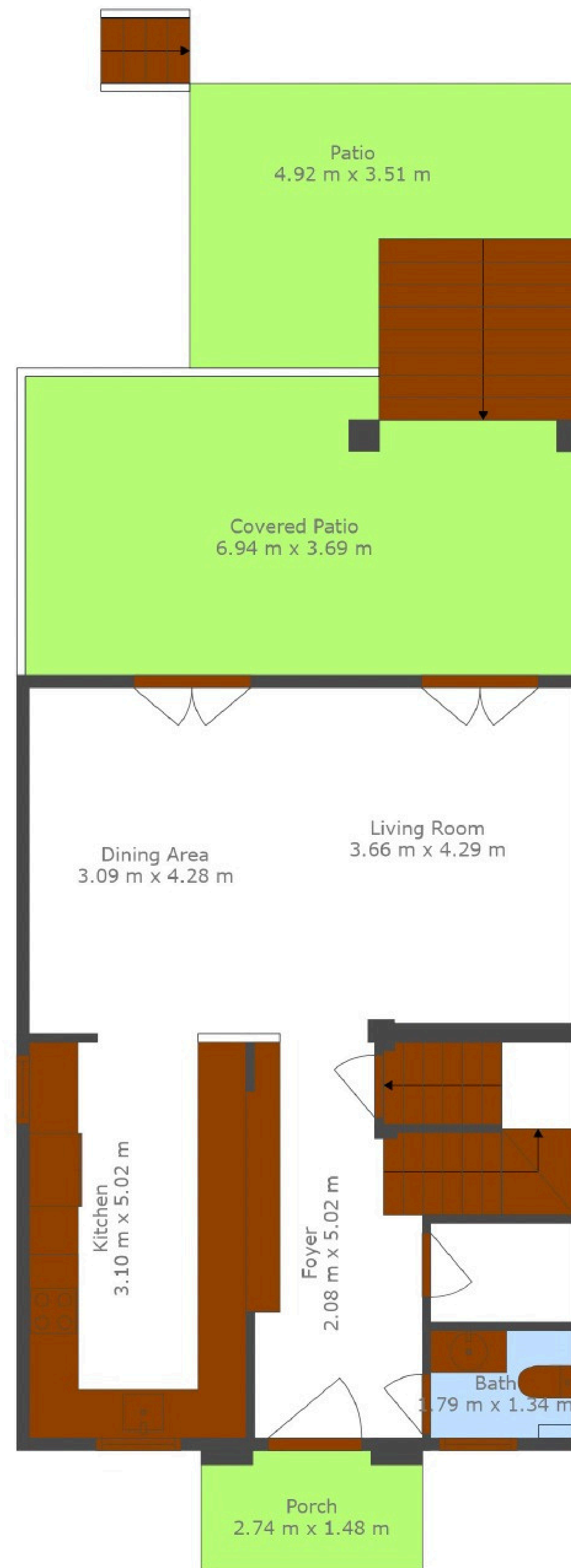
Below Ground: 83 m2, FLOOR 2: 63 m2, FLOOR 3: 63 m2
 EXCLUDED AREAS: COVERED PATIO: 24 m2, PATIO: 13 m2, PORCH: 4 m2,
 BALCONY: 20 m2

Measurements Taken By Crl With An Accuracy Of 99%. For More Detail Contact Crl



TOTAL: 209 m2
 Below Ground: 83 m2, FLOOR 2: 63 m2, FLOOR 3: 63 m2
 EXCLUDED AREAS: COVERED PATIO: 24 m2, PATIO: 13 m2, PORCH: 4 m2,
 BALCONY: 20 m2

Measurements Taken By Crl With An Accuracy Of 99%. For More Detail Contact Crl



TOTAL: 209 m²
 Below Ground: 83 m², FLOOR 2: 63 m², FLOOR 3: 63 m²
 EXCLUDED AREAS: COVERED PATIO: 24 m², PATIO: 13 m², PORCH: 4 m²,
 BALCONY: 20 m²

Measurements Taken By Crl With An Accuracy Of 99%. For More Detail Contact Crl

CHRISTIE'S
INTERNATIONAL REAL ESTATE
———— COSTA DEL SOL ————

Where *Luxury* lives

Velázquez, 1, 29602 Marbella, España
+34 951 122 313 | marbella@cire-costadelsol.com

Paseo de Reding, 25, 29016 Málaga, España
+34 951 122 312 | malaga@cire-costadelsol.com